

Enterocyte



Enterocytes are cylindrical cells that make up most of the cells of the intestinal mucosa. On the luminal side, enterocytes are equipped with a brush border (better developed in the small intestine, less developed in the large intestine). Enterocytes mainly have a secretory and resorption function. Enterocytes in the small intestine are also a source of digestive enzymes.

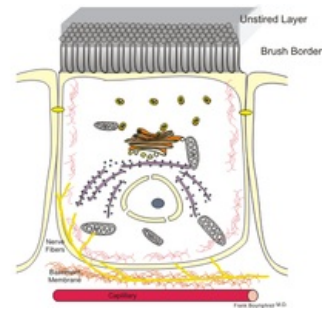
Links

Related articles

- Epitelie

References

- ŠVÍGLEROVÁ, Jitka – SLAVÍKOVÁ, Jana. *Physiology of the gastrointestinal tract*. 1st edition edition. Karolinum, 2008. ISBN 9788024615264.



Enterocyte