

Endothelium

This article has been translated from WikiSkripta; ready for the **editor's review**.

Endothelium is the lining of blood and lymphatic vessels or heart cavities (= endocardium), which is made up of a single layer of epithelial cells.

Links

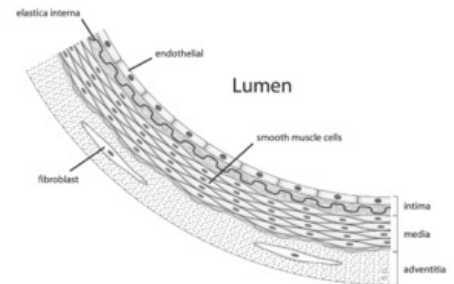
- ws:Endotel
- Vascular Endothelial Cell

External Links

- Endothelium (English Wikipedia)

Sources

- ŠVÍGLEROVÁ, Jitka. *Endotel* [online]. The last revision 2009-02-18, [cit. 2010-11-11]. <<https://web.archive.org/web/20160416224329/http://wiki.lfp-studium.cz/index.php/Endotel>>.
- ws: Endotel



Anatomy Artery