

# Elastic artery WRF

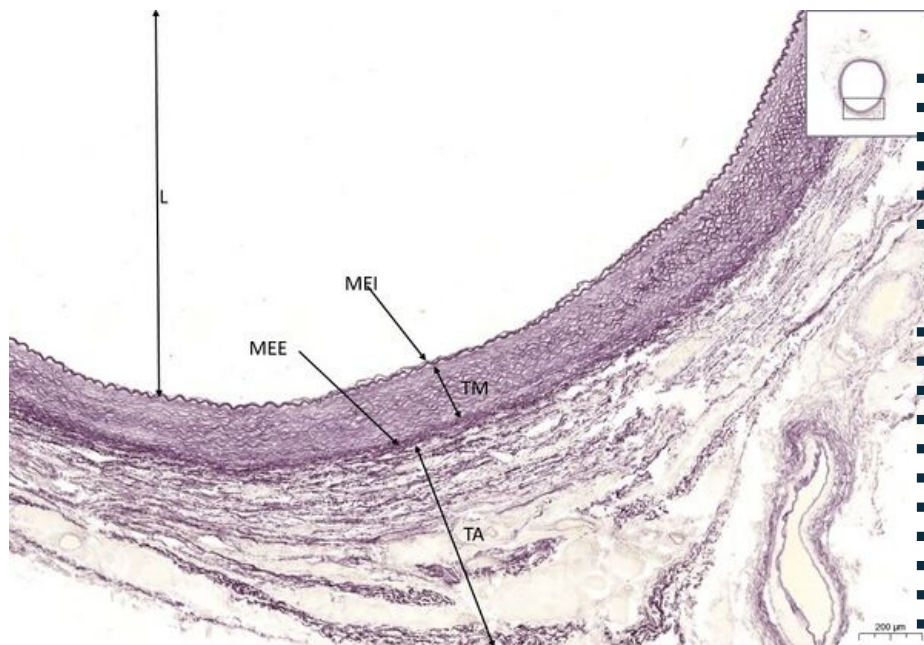
## Elastic artery WRF 1,1x



### Elastic artery WRF

- 1. **TI** - tunica intima
- a) **MEI** - membrana elastica interna
- 2. **TM** - tunica media
- a) **MEF** - membranae elasticae fenestratae
- 3. **MEE** - membrana elastica externa
- 4. **TA** - tunica adventicia
- 5. **L** - Lumen
- 

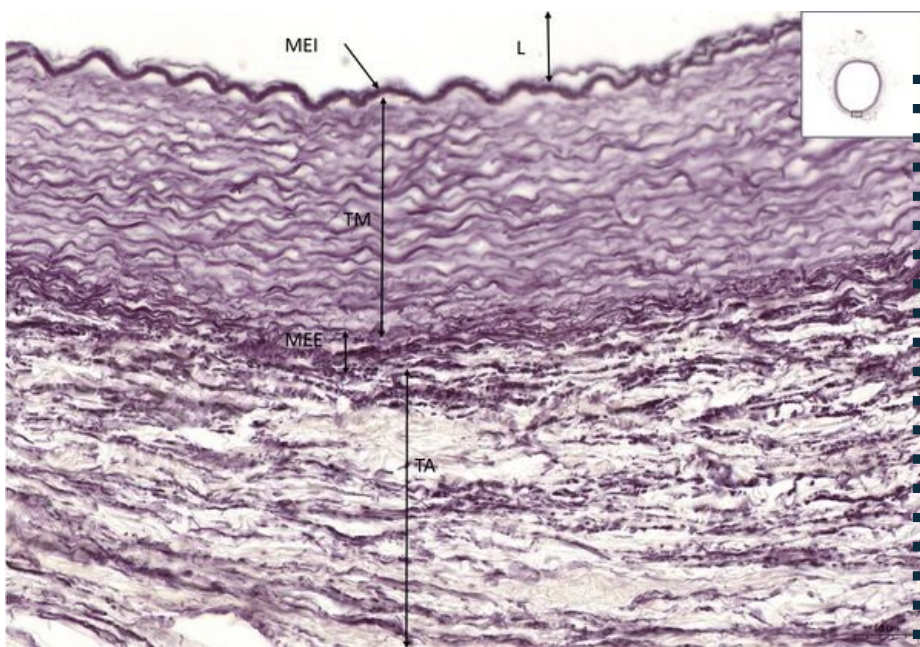
## Elastická arterie/Elastic artery WRF 5x



### Elastic artery WRF

- 1. **TI** - tunica intima
- a) **MEI** - membrana elastica interna
- 2. **TM** - tunica media
- 3. **MEE** - membrana elastica externa
- 4. **TA** - tunica adventicia
- 5. **L** - Lumen

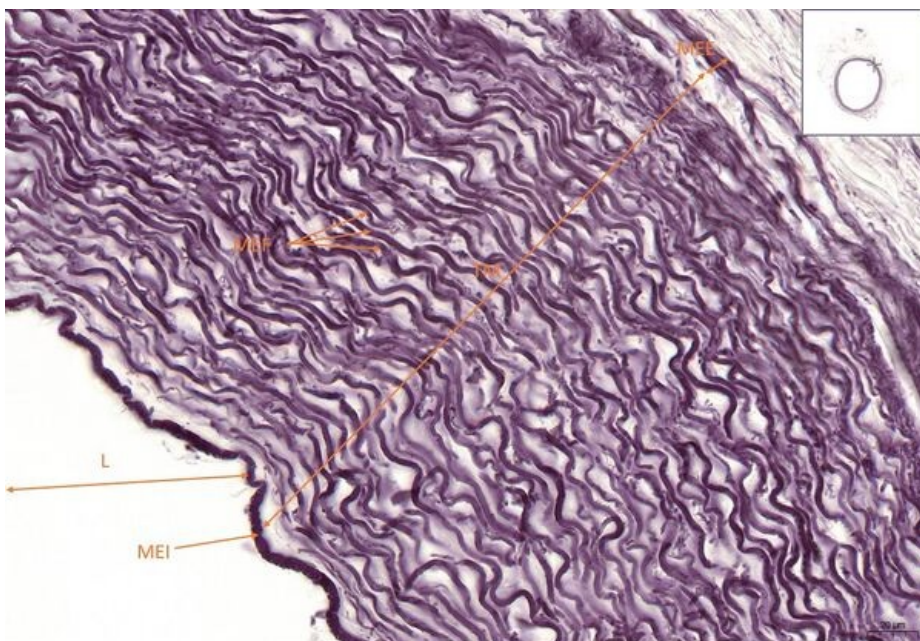
## Elastic artery WRF 20x



**Elastic artery WRF**

- 1. **TI** - tunica intima
- a) **MEI** - membrana elastica interna
- 2. **TM** - tunica media
- 3. **MEE**- membrana elastica externa
- 4. **TA** - tunica adventicia
- 5. **L** - Lumen

## Elastic artery WRF 40x



**Elastic artery WRF**

- 1. **TI** - tunica intima
- a) **MEI** - membrana elastica interna
- 2. **TM** - tunica media
- a) **MEF** - membranae elasticae fenestratae
- 3. **MEE**- membrana elastica externa
- 4. **TA** - tunica adventicia
- 5. **L** - Lumen

# Navigation

Navigation: Circulatory system

← Preparation C1 | List of Slides | Preparation C3 →