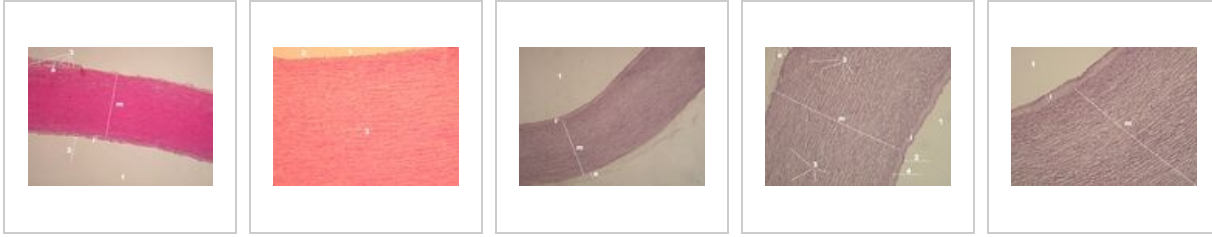
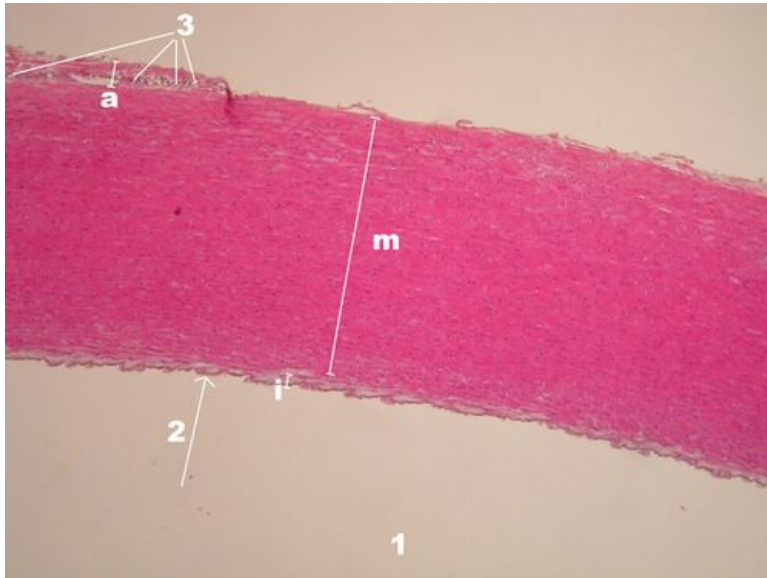


Elastic artery (SFLT)



Aorta - Example of an Elastic Type Artery - Overview (HE)

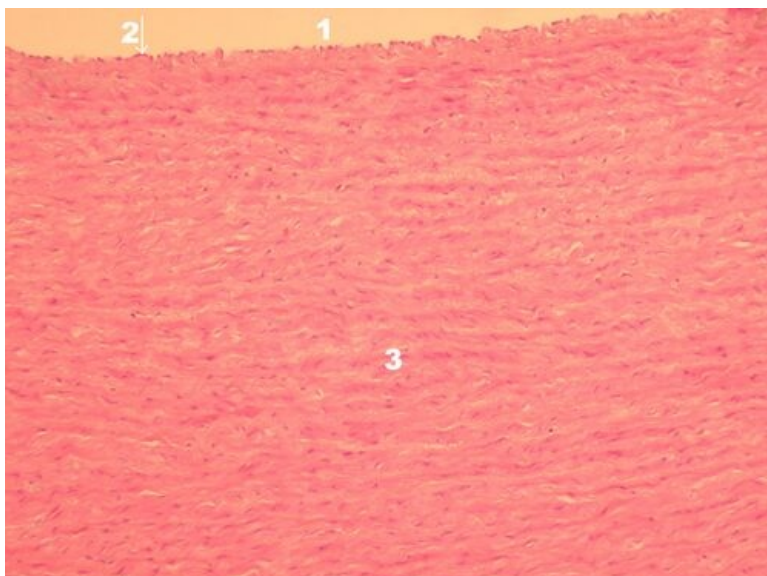


Description: 1 - aortic lumen, 2 - endothelium, 3 - vasa vasorum in tunica adventitia, i - tunica intima, m - tunica media,

and - tunica adventitia, in elastic-type arteries, the membrana elastica interna is hardly distinguishable from elastic ones

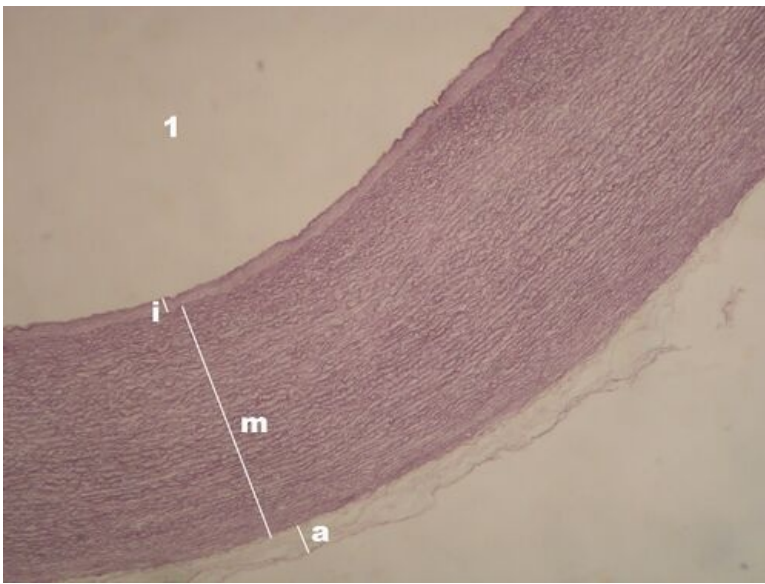
membranes in the middle layer

Aorta - tunica media detail (HE)



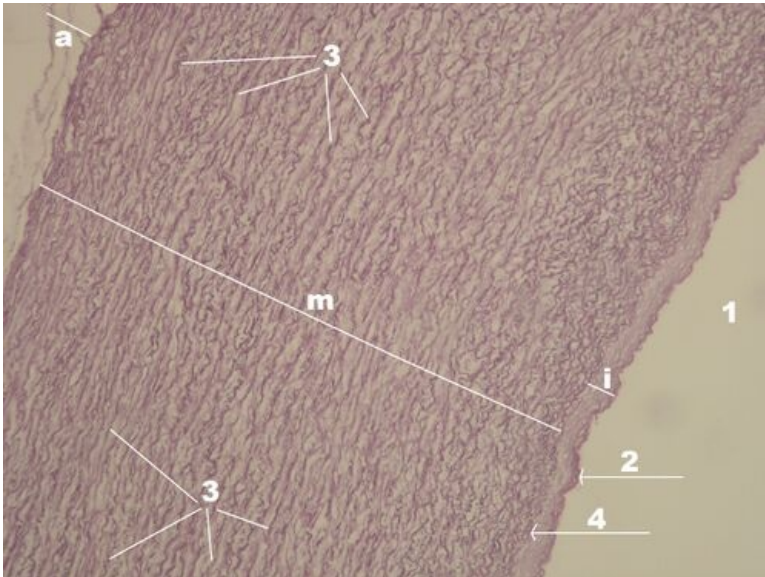
Description: 1 - aortic lumen, 2 - endothelium, 3 - tunica media

Aorta - overview (resorcin-fuchsin)



Description: 1 – aortic lumen, i – tunica intima, m – tunica media, a – tunica adventitia. *note:* resorcin-fuchsin is a stain for elastic fibers

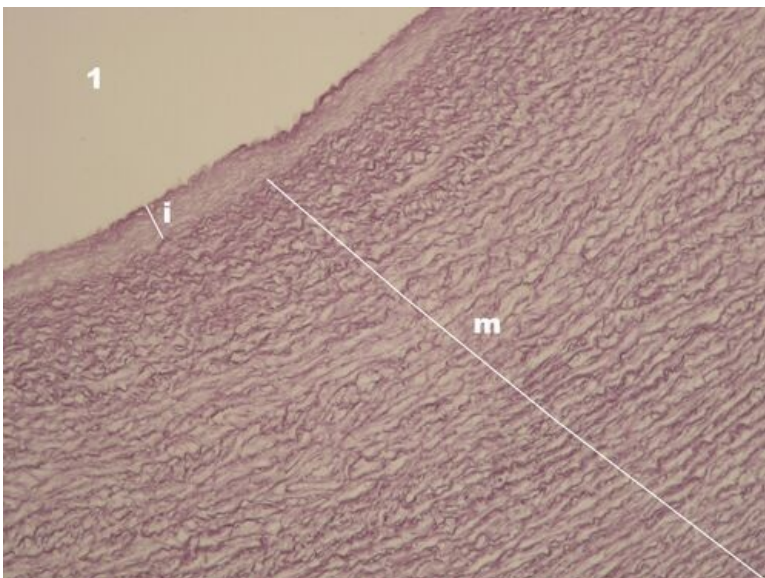
Aorta - wall layers (resorcin-fuchsin)



Description: 1 – aortic lumen, 2 – endothelium, 3 – elastic membranes in the muscle layer, 4 – the first of the elastic membranes (=membrana elastica interna), i – tunica intima, m – tunica media, a – tunica adventitia.

note: resorcin-fuchsin is a stain for elastic fibers

Aorta - tunica media detail (resorcin-fuchsin)



Description:1 – aortic lumen, i – tunica intima, m – tunica media

note: resorcin-fuchsin is a stain for elastic fibers

Vascular system

- Elastic artery (SFLT)
- Muscular artery (SFLT)
- Vein (SFLT)
- Myocardium (SFLT)

Links

- Module Cellular Basics of medicine(3. LF UK)