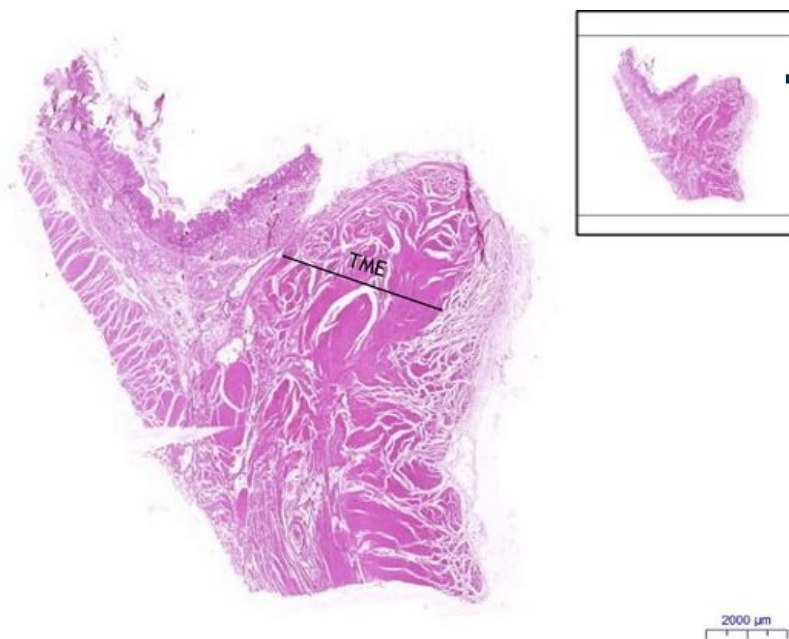


Duodenum HE

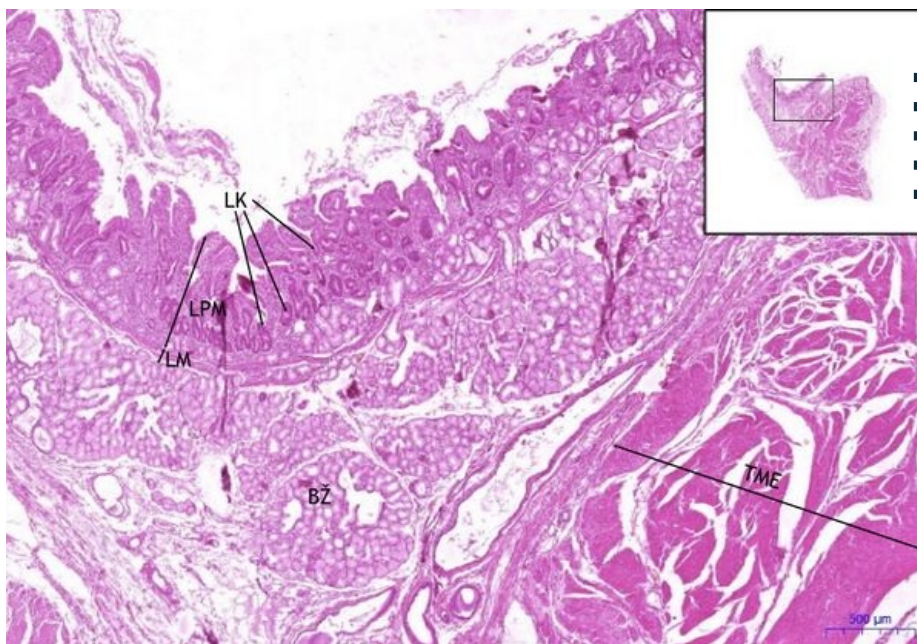
Duodenum, HE 0,5x



Duodenum:

- 1) **TME** - tunica muscularis externa

Duodenum, HE 2x



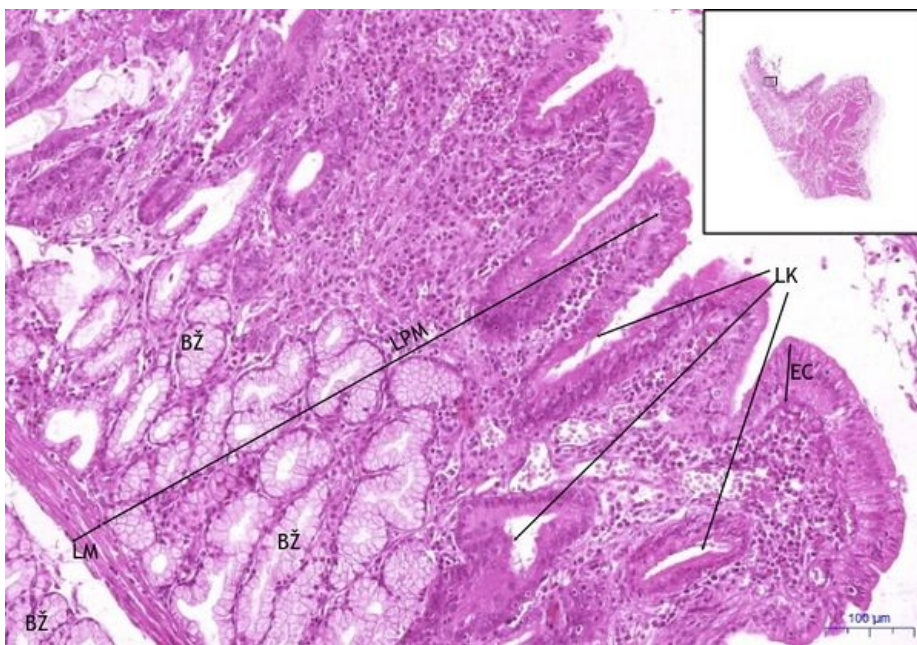
Duodenum:

- 1) **TM** - tunica mucosa
- a) **LPM** - lamina propria mucosae
- b) **LM** - lamina muscularis mucosae
- 2) **TS** - tunica submucosa
- 3) **TME** - tunica muscularis externa

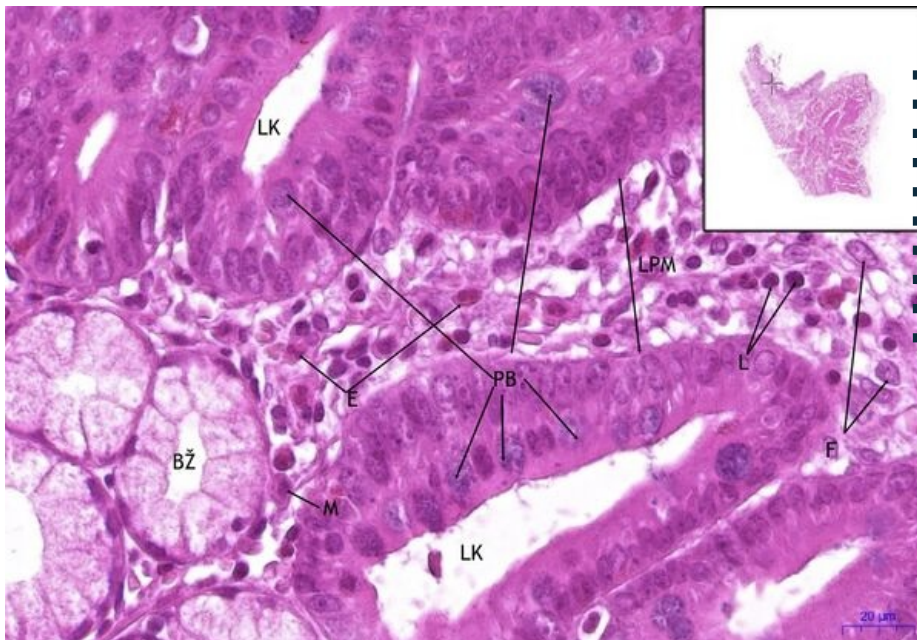
Duodenum, HE 10x

Duodenum:

- 1) **TM** - tunica mucosa
- a) **EC** - simple columnar epithelium
- b) **LPM** - lamina propria mucosae
- c) **LK** - Lieberkuhn's crypts
- d) **BŽ** - Brunner's glands
- e) **LM** - lamina muscularis mucosae



Duodenum, HE 40x



Duodenum:

- 1) **TM** - tunica mucosa
- a) **EC** - simple columnar epithelium
- b) **LPM** - lamina propria mucosae
- c) **LK** - Lieberkuhn's crypts
- d) **BŽ** - Brunner's glands
- e) **PB** - goblet cells
- f) **E** - eosinophil
- g) **F** - fibroblast
- h) **L** - lymphocyte
- i) **M** - monocyte

Navigation

Navigation: Digestive tract

← Preparation Z12 | List of preparations | Preparation Z15 →