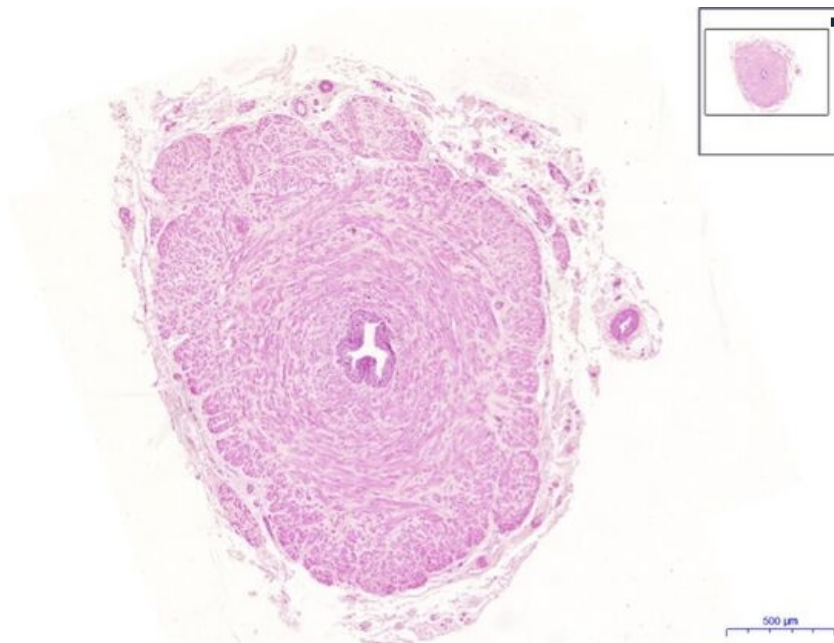


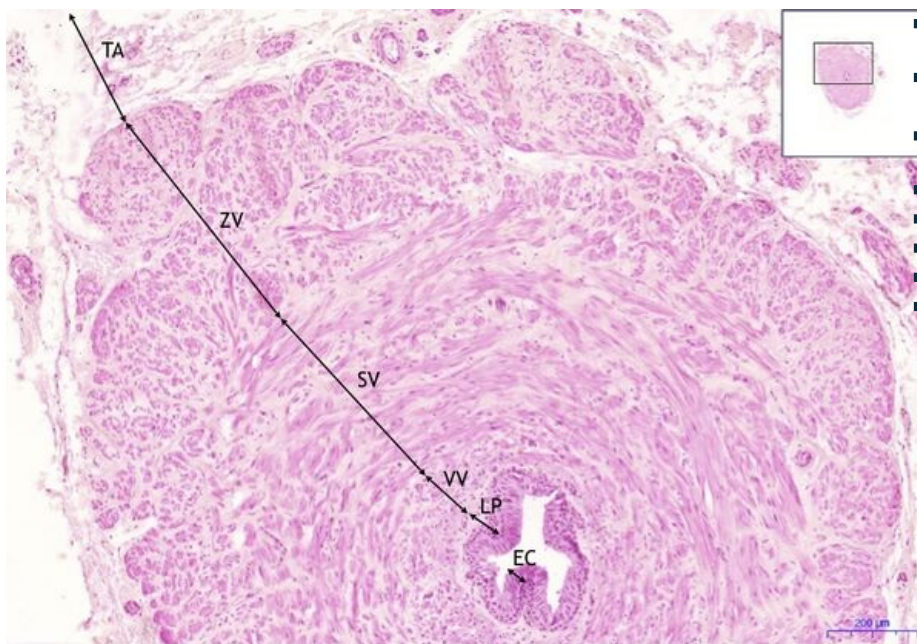
# Ductus deferens HE

## Ductus deferens, HE 2,4x



■ Ductus deferens:

## Ductus deferens, HE 5x



■ Ductus deferens:

- 1) EC - columnar epithelium, two layered
- 2) LP - lamina propria

■ Muscle layers:

- 3) VV - inner (longitudinal) layer
- 4) ST - middle layer - circular
- 5) ZV - outer (longitudinal) layer
- 6) TA - tunica albuginea

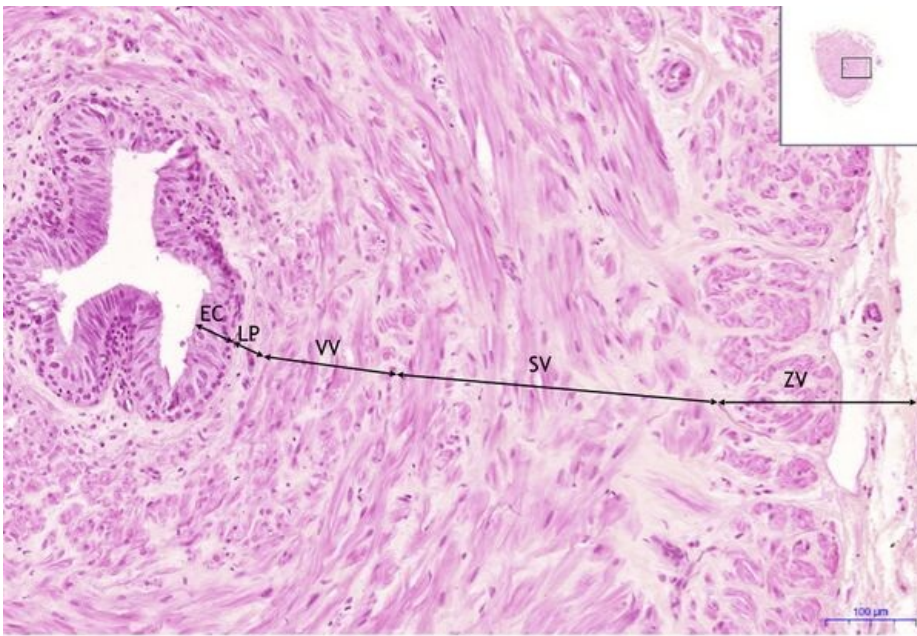
## Ductus deferens, HE 10x

■ Ductus deferens:

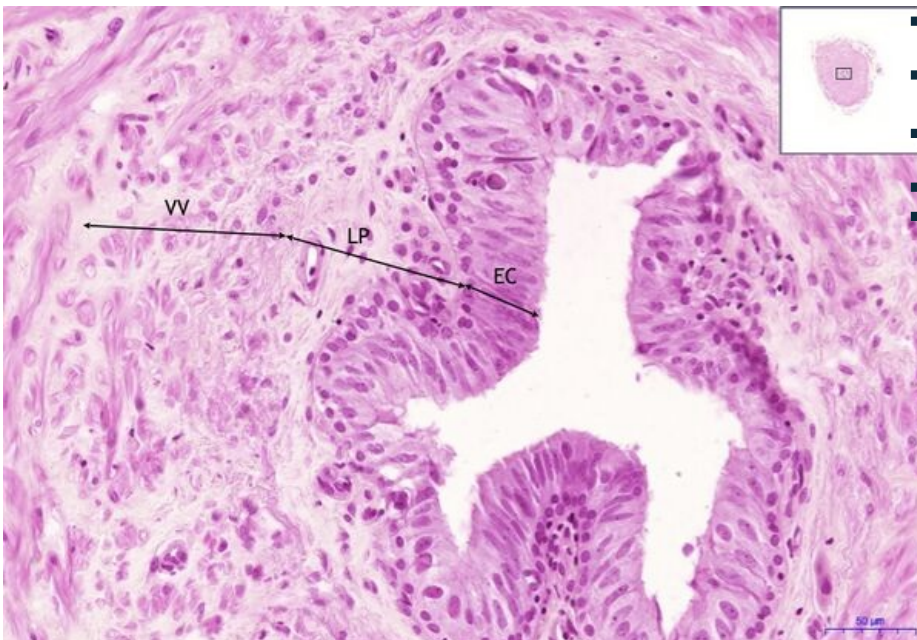
- 1) EC - columnar epithelium, two layered
- 2) LP - lamina propria

■ Muscle layers:

- 3) VV - inner (longitudinal) layer
- 4) ST - middle layer - circular
- 5) ZV - outer (longitudinal) layer



## Ductus deferens, HE 20x



- **Ductus deferens:**
  - **1) EC** - columnar epithelium, two layered
  - **2) LP** - lamina propria
- **Muscle layers:**
  - **3) VV** - inner (longitudinal) layer

## Navigation

**Navigation: Digestive tract**

← Preparation M3 | List of preparations | Preparation M4 →