

Diapedesis

Template:Zkontrolováno



Diapedesis is the transfer of cells, most often leukocytes, through an intact vessel wall into the surrounding tissues. This process is mostly based on chemotaxis.

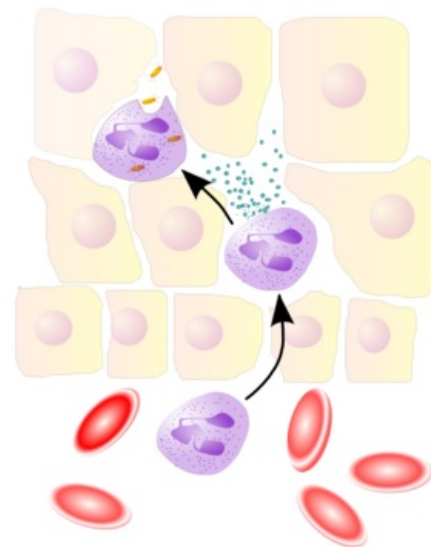
Links

Related Articles

- Phagocytosis

Source

- ŠVÍGLEROVÁ, Jitka. *Diapedéza* [online]. The last revision 18. 2. 2009, [cit.



Diapedesis of a neutrophil from a blood vessel attracted by proteolytic enzymes.

13.11.2010]. <<https://web.archive.org/web/20160306065550/http://wiki.lfp-studium.cz/index.php/Diapedéza>>.