

Development of palate

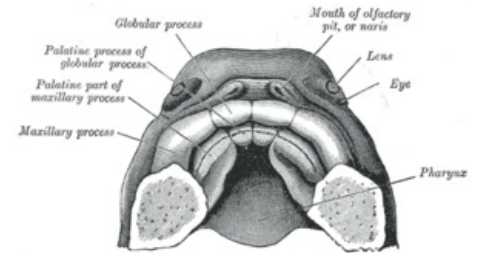
The palate develops from two foundations - from the primary palatae and from the secondary palate. The critical period for palate development peaks around the sixth week.

Primary palate

The processus palatinus medianus develops from the intermaxillary segment of the upper jaw. The median palatine process later forms the base of the premaxilla.

Secondary palate

It forms the basis of the hard and soft palate in the area behind the foramen caecum. It is formed by two mesenchymal protrusions on the inner surface of the maxillary processes - the lateral palatal processes. The projections first go in the mediocaudal direction, then the growing jaw and the tongue develop horizontal to them. The projections then merge in the midline and form the palate.



Palate development