

Description of the Chromosome

When we want to describe the location of some structural abnormality or the location of some specific region (e.g. gene locus) we use **special marks**. We have to count the regions always from the centromere – for both arms.

Example: 1q13

- the first number is **the number of chromosome** – *chromosome 1*;
- (p) and (q) are used for **the marking of arm** – (p) for small arm and (q) for long arm – *the long arm*;
- the third number is for **the region** of chromosome – *region 1*;
- last number is for **the band** – *band 3*.

So the change is located on the long arm of chromosome 1 (see Fig. Chromosomal marking).

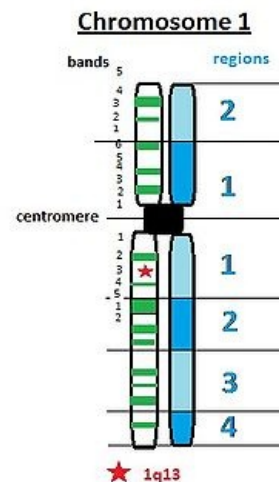
Links

Related articles

- Chromosomal Abnormalities
- Eukaryotic Chromosomes

Bibliography

- KUMAR, ABBAS, FAUSTO, MITCHELL,, et al. *Robbins Basic Pathology*. 8th edition edition. 2007. ISBN 978-0-8089-2366-4.



Chromosomal marking