

# Decidua

**Decidua** is the term for the endometrial lining at the end of the secretory phase of the menstrual cycle and during pregnancy. At the same time, it defines the part of the endometrium that separates after childbirth with the placenta. Its structure is characterized by decidual cells and a significant population of lymphocytes. The decidua is responsible for the exchange of gases, nutrients and waste products between the mother and the embryo, while also protecting the mother's immune system.

## Links

### Related articles

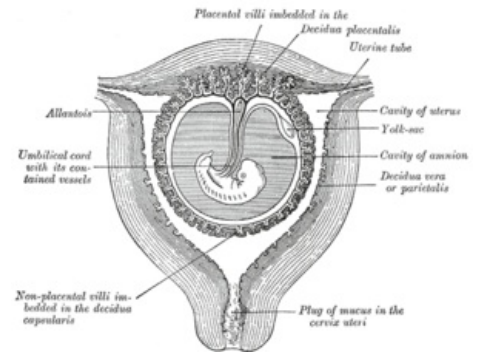
- Uterus
- Placenta (histology)

### Decidua as a histological preparation

- Portal: Embryological preparations

## References

- LÜLLMANN-RAUCH, Renate. *Histologie*. 1. edition. Grada, 2012. ISBN 978-80-247-3729-4.
- MESCHER, Anthony L – JUNQUEIRA, Luiz Carlos Uchôa. *Junqueira's Basic Histology*. 12. edition. McGraw-Hill Education – Europe, 2009. 480 pp. ISBN 9780071630207.



Section through the uterus in the 3rd and 4th month of pregnancy