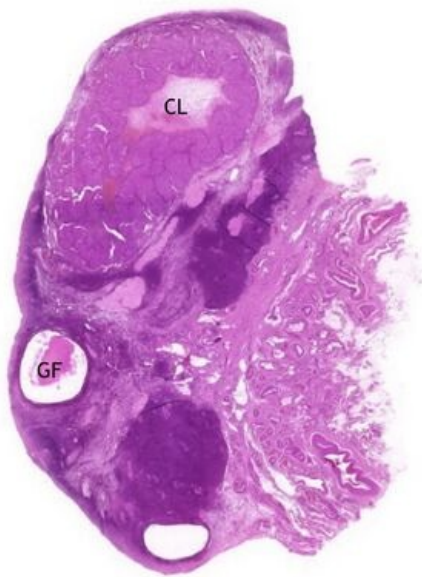


Corpus luteum - HE

Ovarium (corpus luteum) - HE, 0,3x



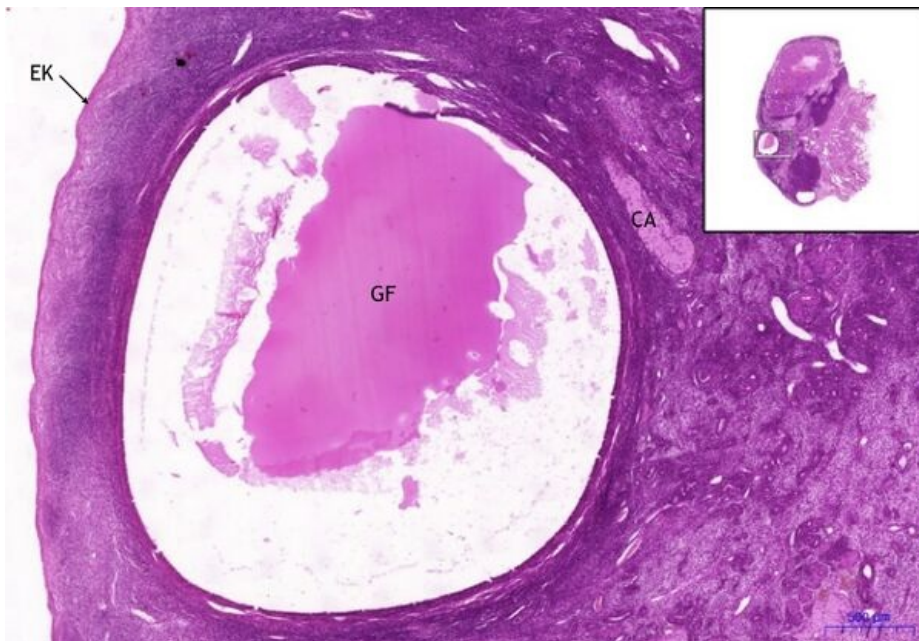
Ovarium (corpus luteum):

- 1) CL - corpus luteum
- g) GF - Graaf follicle

Ovarium (corpus luteum) - HE, 2x

Ovarium (corpus luteum):

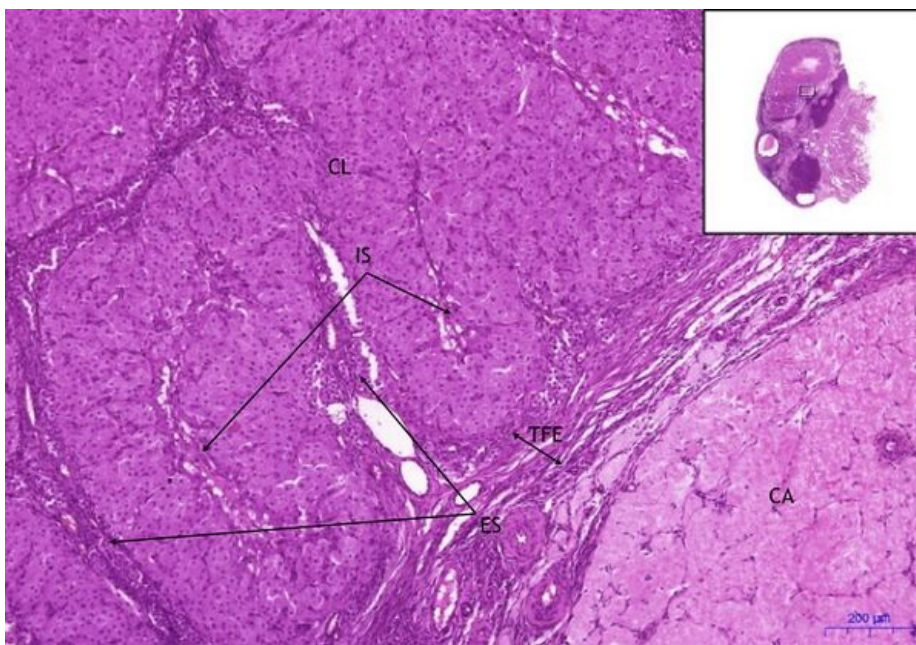
- f) CA - corpus albicans
- g) GF - Graaf follicle
- h) EK - simple cuboidal epithelium



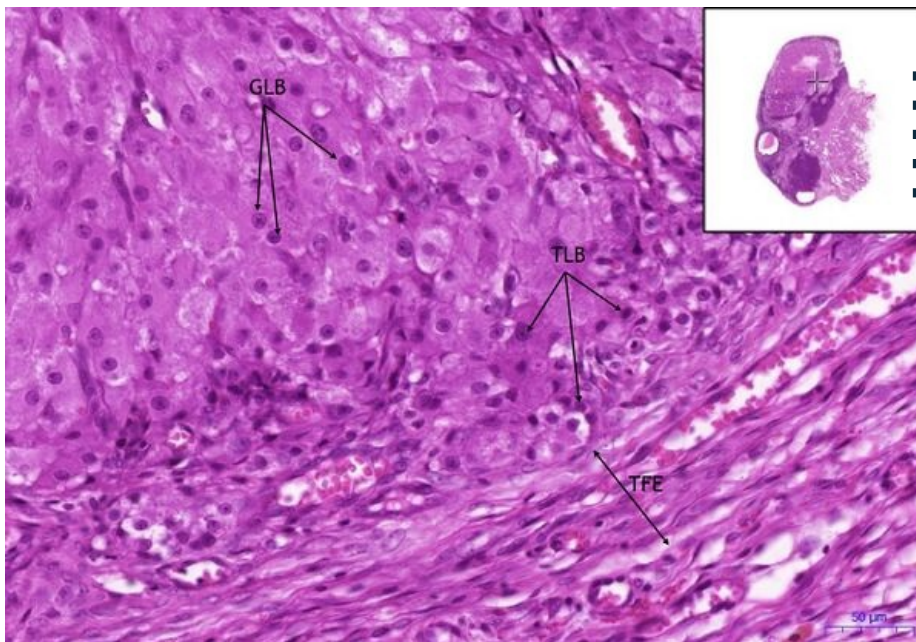
Ovarium (corpus luteum) - HE, 5x

Ovarium (corpus luteum):

- 1) CL - corpus luteum
- c) TFE - theca folliculi externa
- d) ES - externí septa
- e) IS - interstitial connective tissue septa
- f) CA - corpus albicans
-



Ovarium (corpus luteum) - HE, 20x



Ovarium (corpus luteum):

- 1) **CL** - corpus luteum
- a) **GLB** - granulosa lutein cells
- b) **TLB** - theca lutein cells
- c) **TFE** - theca folliculi externa
-

Navigation

Female genital system

← Slide G1 | List of the slides | Slide G3 →