

Coefficient of Inbreeding

This article was checked by pedagogue



This article was checked by pedagogue, but more than year ago.

Signature: OSeda (talk)



English: *Coefficient of inbreeding*
Czech: *koefficient inbreedingu*



Coefficient of inbreeding refers to the probability that an individual inherited both alleles of a particular locus / gene from a single ancestor. The coefficient is calculated as follows

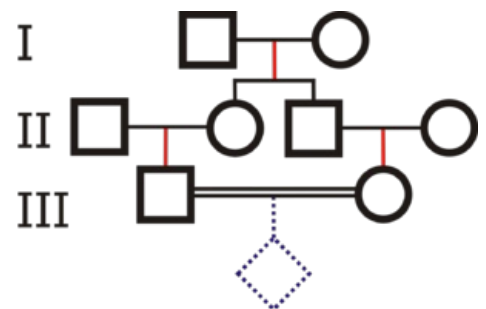
$$F = \left(\frac{1}{2}\right)^{n+1}$$

where n represents the number of steps in genealogy.

Links

Related articles

- Coefficient of Relatedness



$$F = \left(\frac{1}{2}\right)^{3+1} = 1/16$$

Calculation of the Coefficient of inbreeding