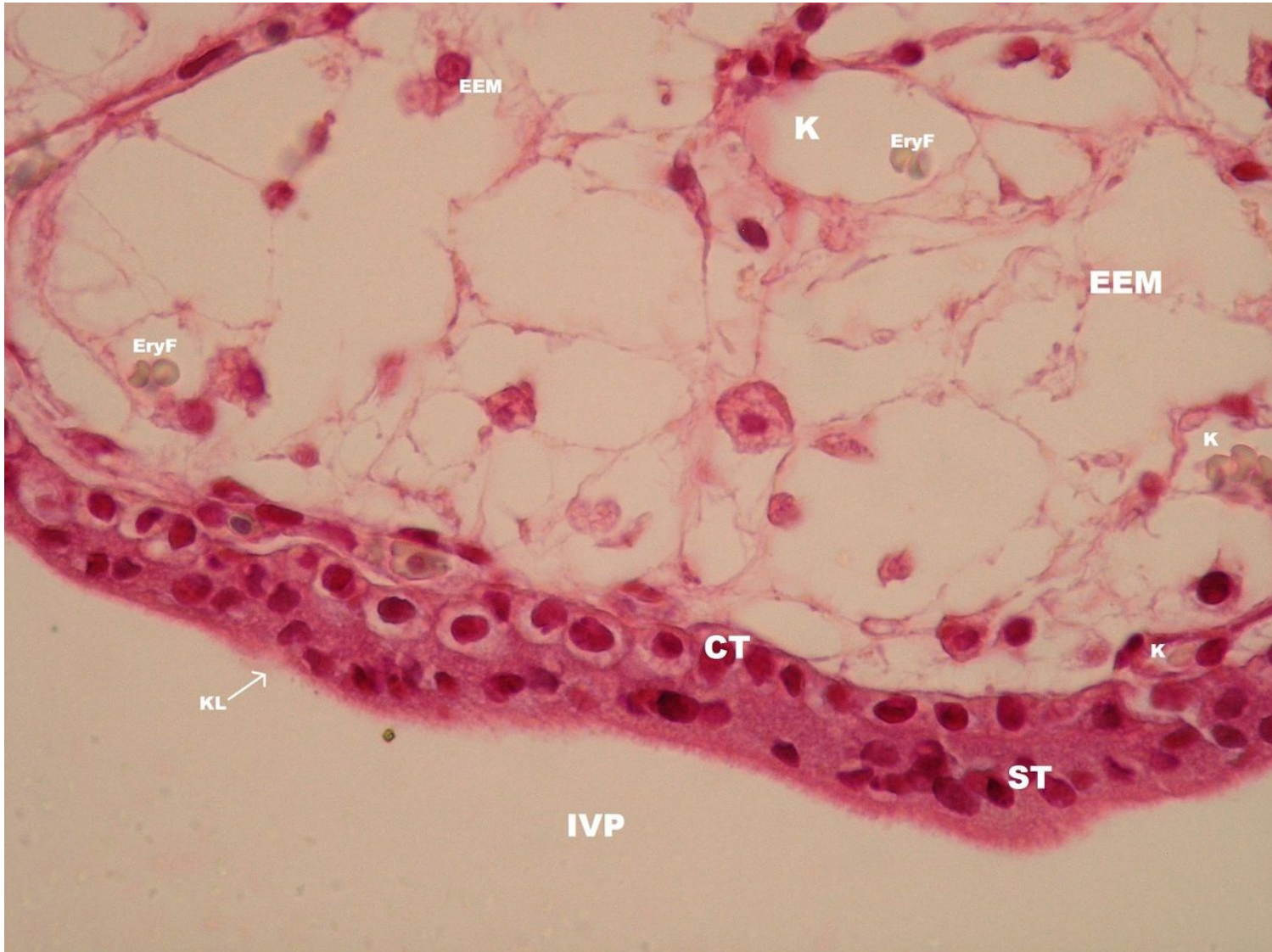


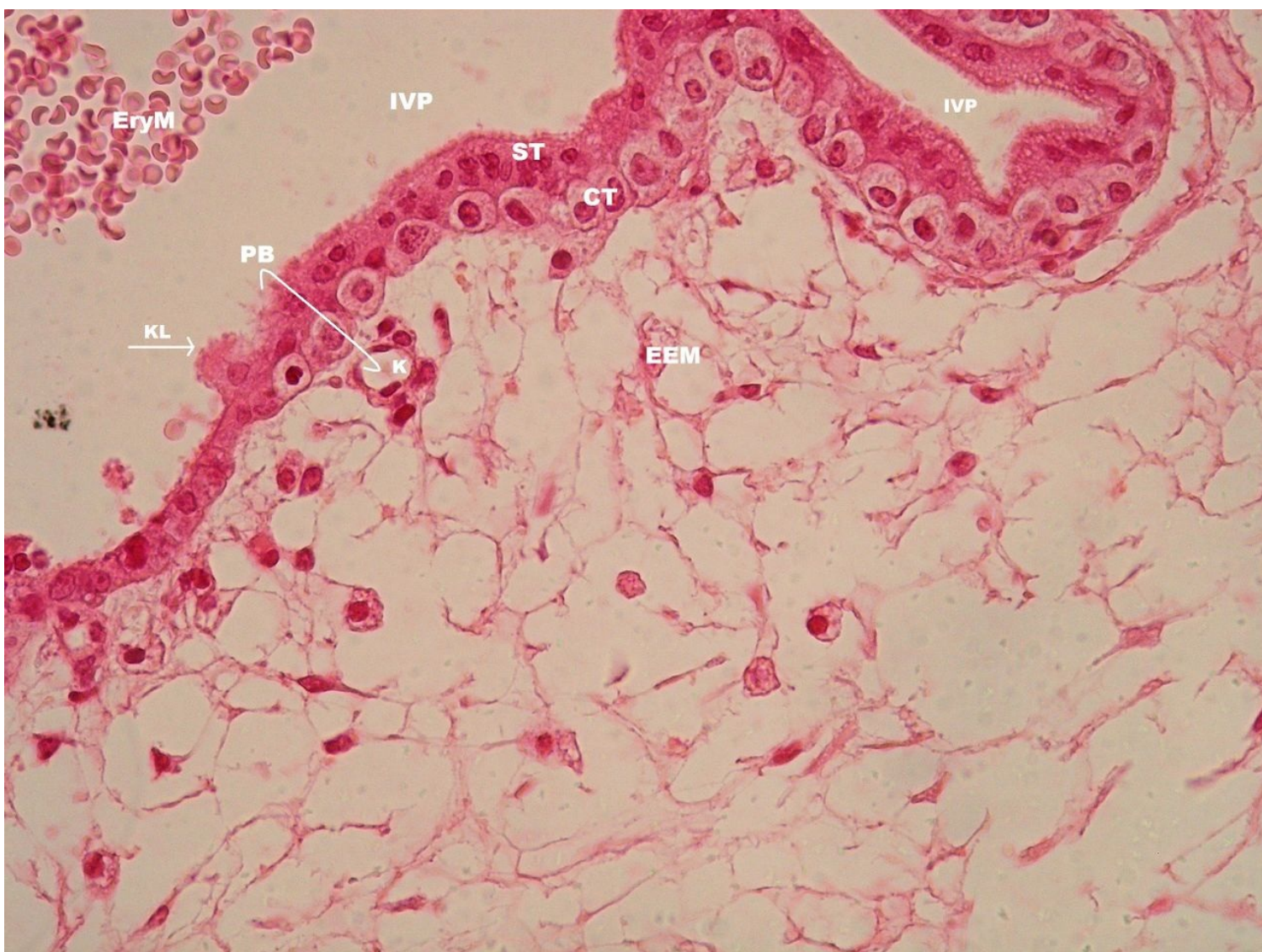
Chorion frondosum (SFLT)

Chorion frondosum - villus detail (HE staining)



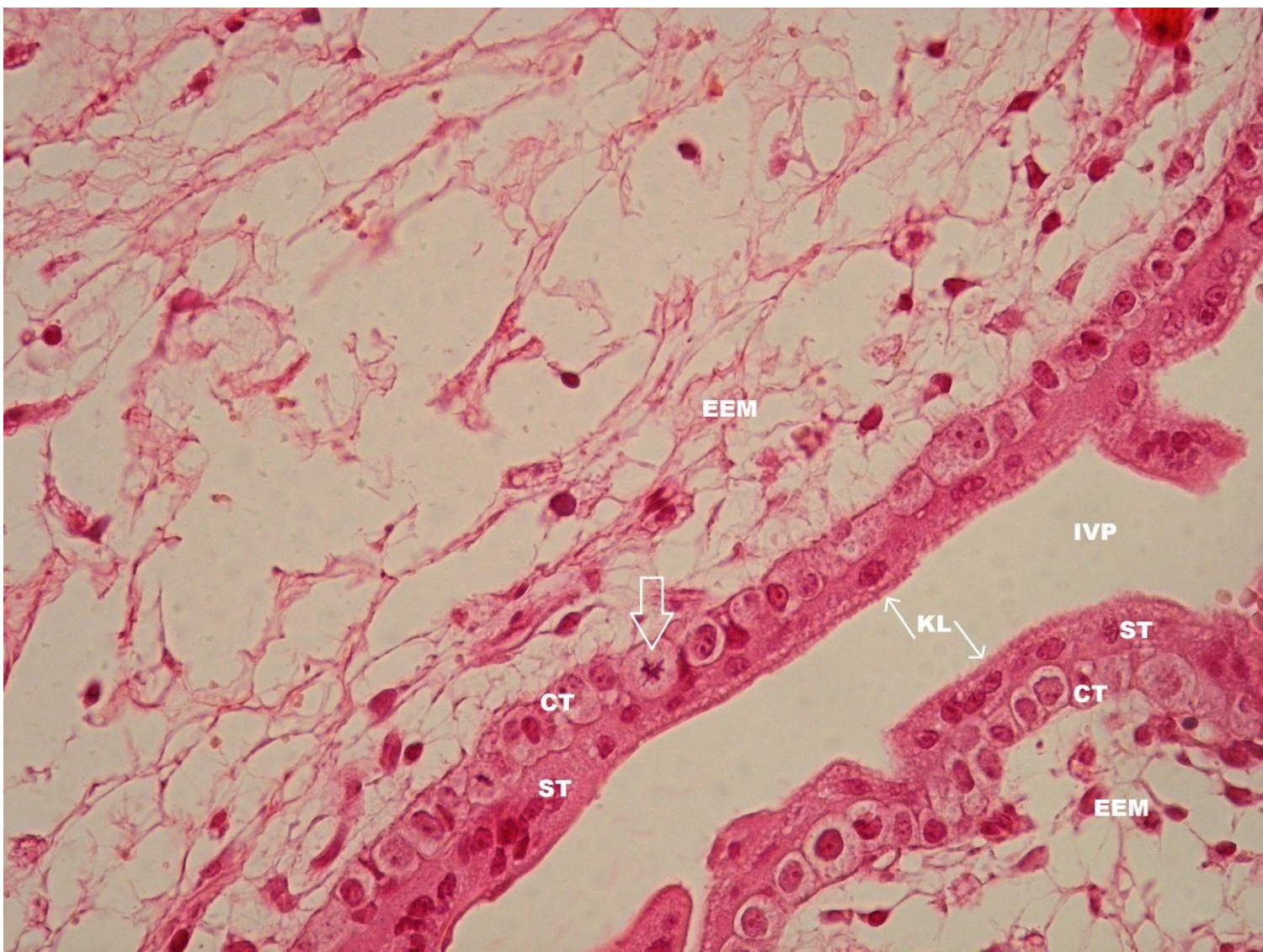
Description: CT – cytotrophoblast, ST – syncytiotrophoblast, KL – brush border of syncytiotrophoblast, EEM – extraembryonic mesoderm, K – capillary with fetal blood erythrocytes (EryF), IVP – intervillous space

Chorion frondosum - placental barrier (HE staining)



Description: CT - cytotrophoblast, ST - syncytiotrophoblast, KL - brush border of syncytiotrophoblast, EEM - extraembryonic mesoderm, K - capillary, IVP - intervillous space with maternal blood erythrocytes (EryM), PB - placental barrier (shown as loop) includes: capillary endothelium (K), capillary endothelium basement membranes, EEM - extraembryonic mesoderm, cytotrophoblast basement membrane, CT - cytotrophoblast, ST - syncytiotrophoblast, KL - syncytiotrophoblast brush border

Chorion frondosum - cytotrophoblast and syncytiotrophoblast (HE staining)



Description: CT - cytotrophoblast, ST - syncytiotrophoblast, KL - brush border of syncytiotrophoblast, EEM - extraembryonic mesoderm, IVP - intervillous space, thick arrow - mitosis in cytotrophoblast

Foetal membranes

- Umbilical Cord (SFLT)
- Foetal membranes (SFLT)
- Placenta (SFLT)
- Chorion frondosum (SFLT)

Links

- Histological atlas (3. LF UK)