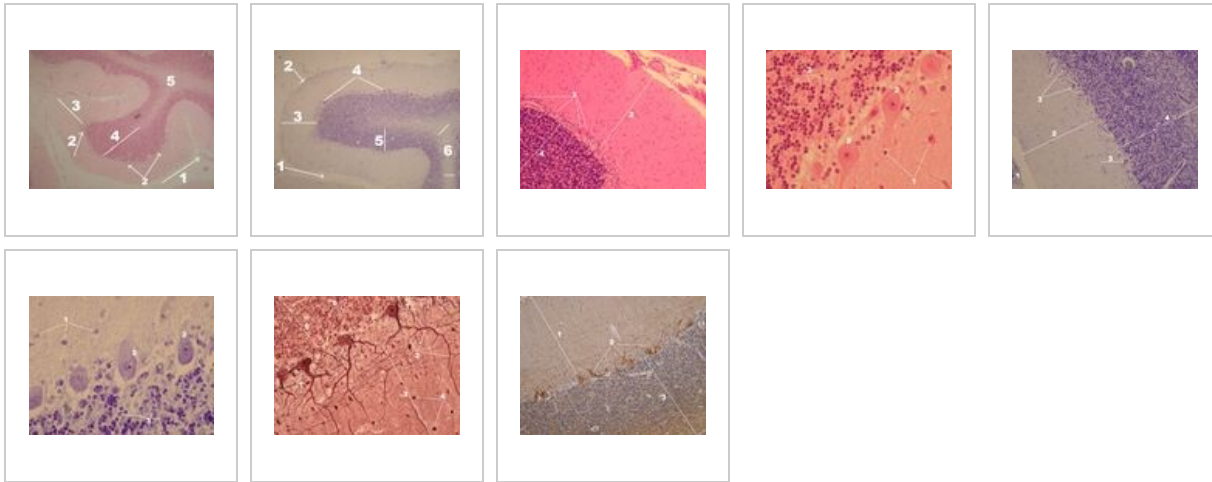
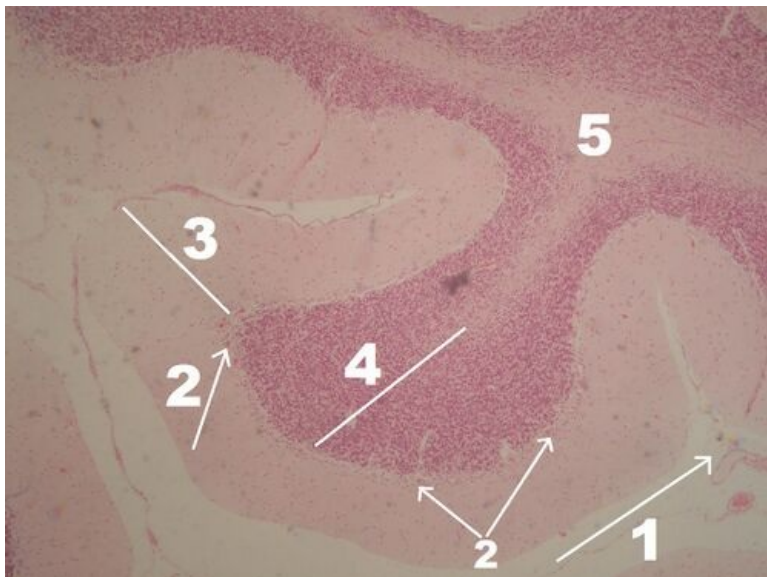


Cerebellum (SFLT)

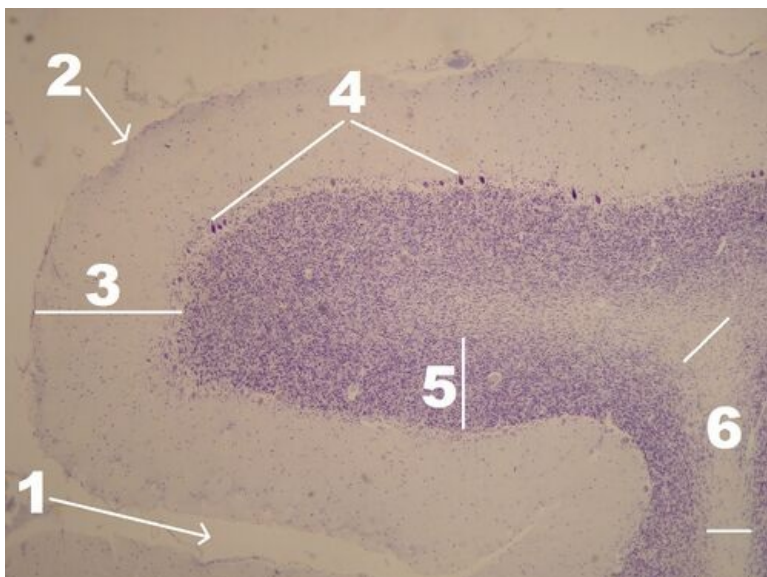


Cerebellum - clear magnification (HE staining)



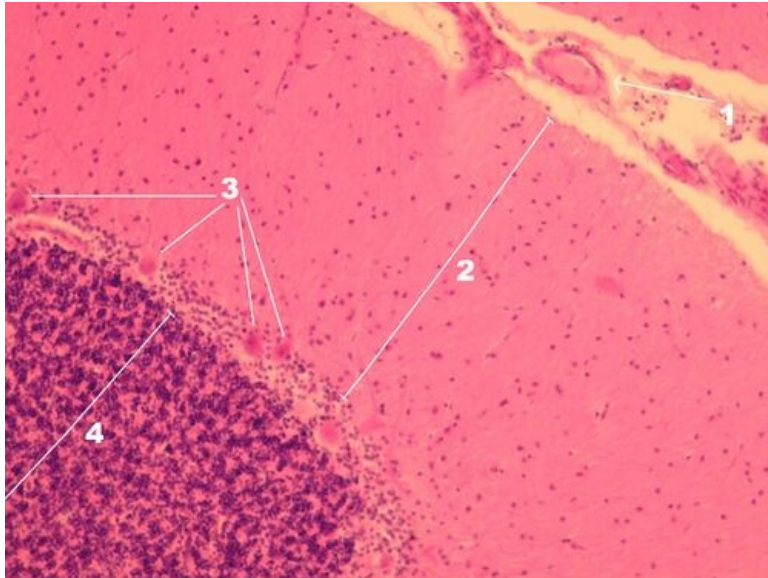
Description: 1 – pial surface of the cerebellum, the *pia mater* extends into the groove (*sulcus*) between the cerebellar coils (*folia*) and supplies blood vessels, cortex: 2 – Purkinje cells – the most prominent structure already visible under clear magnification, 3 – *stratum moleculare*, 4 – *stratum granulare*, 5 – white matter of the cerebellar hemisphere

Cerebellum - clear enlargement (cresyl violet)



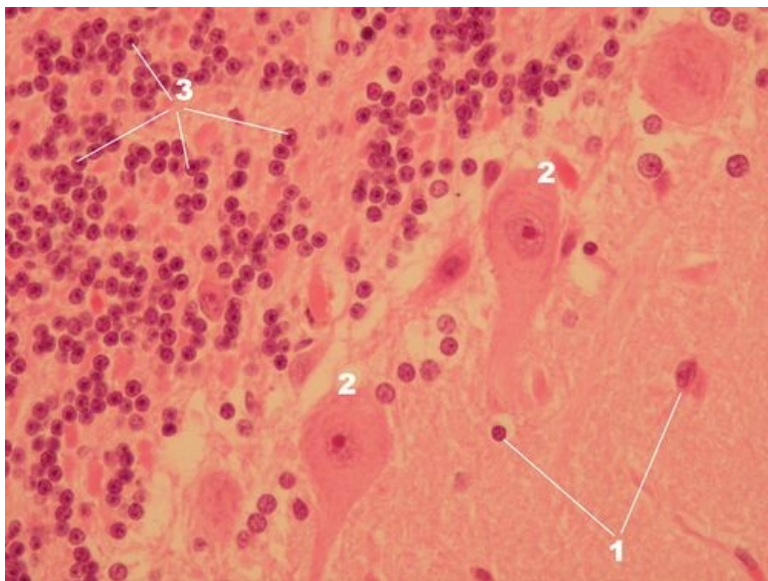
Description: 1 – groove between the cerebellar folia (convolutions), 2 – *pia mater* on the surface of the cerebellum extends into the sulci, cortex: 3 – *stratum moleculare* , 4 – Purkinje cells – the most prominent structure visible already at a clear magnification, 5 – *stratum granulare* , 6 – white matter of the cerebellar hemisphere

Cerebellum - overview of cortical layers (HE staining)



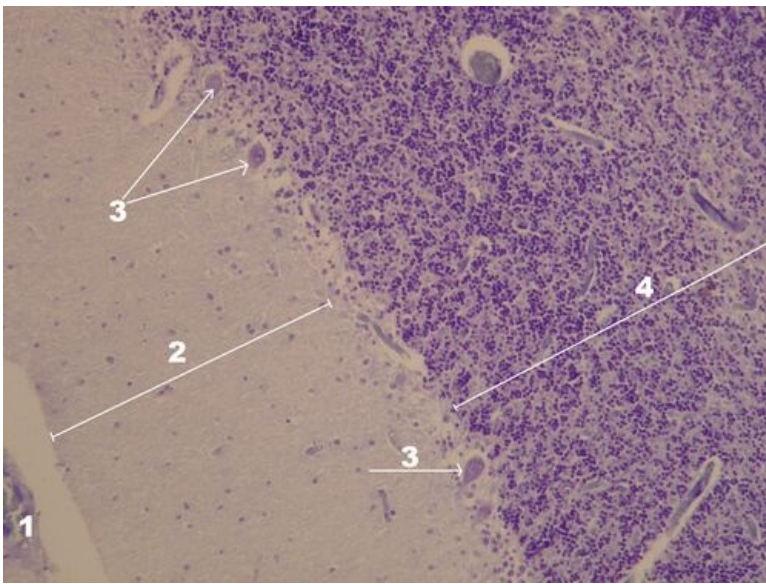
Description: 1 – *sulcus* supplying *pia mater* ligament with blood vessels, 2 – *stratum moleculare* , 3 – Purkinje cells, 4 – *stratum granulare*

Cerebellum - cortical layers detail (HE staining)



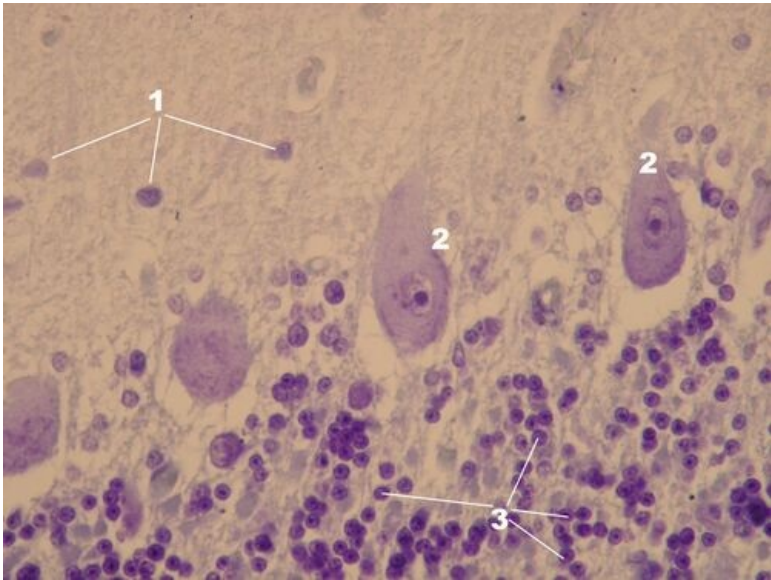
Description: 1 – nuclei belonging to the cells of the *stratum moleculare* (stellate and basket cells), 2 – Purkinje cells, 3 – nuclei belonging to the cells of the *stratum granulosum* (granular and Golgi cells)

Cerebellum - an overview of the layers of the cortex (cresyl violet)



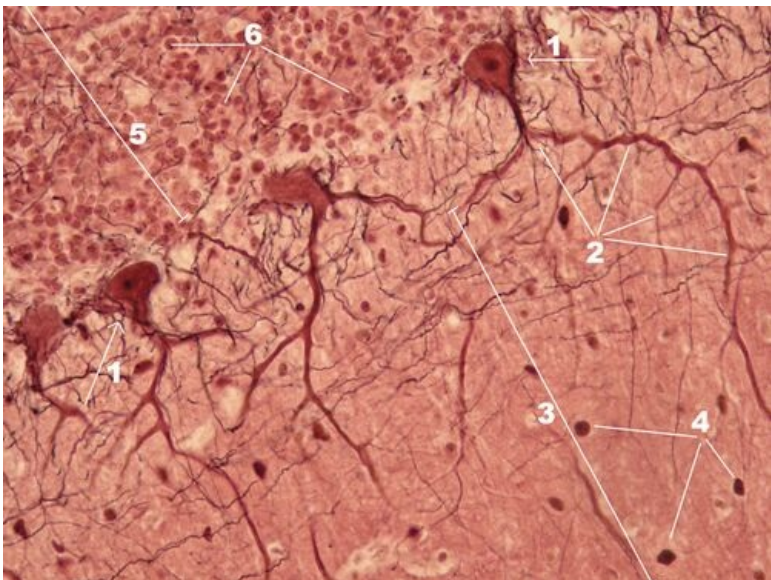
Description: 1 - pia mater with vessels, 2 - stratum moleculare, 3 - Purkinje cells, 4 - stratum granulosum

Cerebellum - cortical layers detail (cresyl violet)



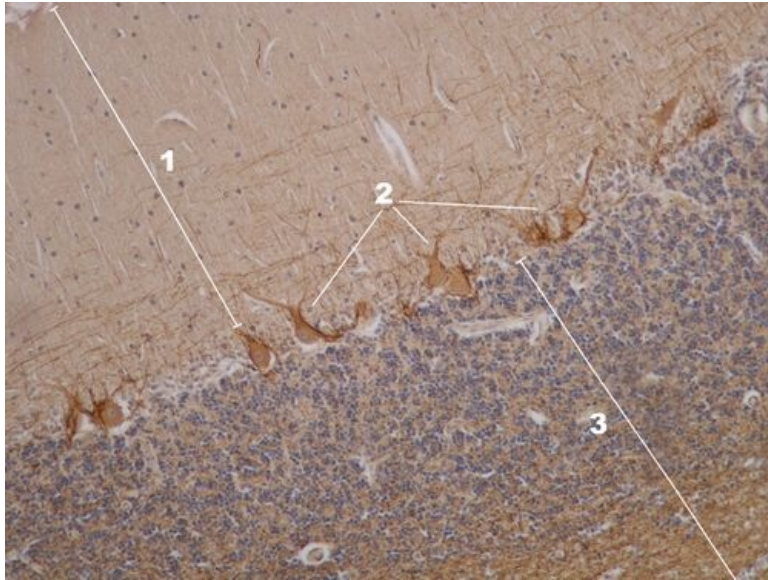
Description: 1 - nuclei belonging to the cells of the stratum moleculare (stellate and basket cells), 2 - Purkinje cells, 3 - nuclei belonging to the cells of the stratum granulosum (granular and Golgi cells), granular cells are the smallest cells in the human body

Cerebellar cortex - Purkinje cell (silvering)



Description: 1 - Purkinje cell, 2 - branching of the dendritic tree of Purkinje cells in the stratum moleculare (3), 4 - cells of the stratum moleculare, 5 - stratum granulosum with nuclei of granular cells (6)

Cerebellar cortex - overview of layers (immunohistochemical evidence)



Description: 1 – *stratum moleculare*, 2 – Purkinje cells, 3 – *stratum granulosum*

Nervový systém

- Cerebral cortex (SFLT)
- Cerebellum (SFLT)
- Spinal cord (SFLT)
- Plexus choroideus (SFLT)
- Spinal ganglion (SFLT)
- Autonomic ganglion (SFLT)
- Spinal nerve (SFLT)

Links

- Module Cellular Basics of medicine(3. LF UK)