

Cavernous sinus

The sinus cavernosus is a **venous sinus** in the dura mater at the base of the skull on either side of the *sella turcica*.

It has a **spongy** structure, due to the numerous **trabeculae** that penetrate it. Through *v. ophthalmica* it is connected to blood draining from the facial area. Some purulent infections in the face (e.g. furuncle, cheilitis) can thus spread to this area and cause severe **intracranial infections** and *thrombosis* of the sinus.

Related anatomical structures:

- *a. carotis interna*,
- *n. abducens*,
- in its side wall: *n. III.*, *n. IV.*, *n. ophthalmicus*.

Receives blood from:

- *v. ophthalmica superior*.

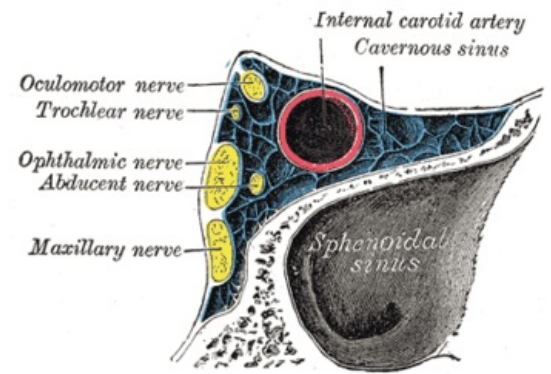


Schéma sinus cavernosus.

Cavernous sinus thrombosis

- Severe pain behind the eye and in the eye, sometimes near the eye;
- conjunctival injection, which may prolapse in front of the bulbus;
- papilledema, hemorrhage on the eye fundus;
- vision impairment up to **blindness**.

Links

Related articles

- Internal carotid artery
- Abducent nerve
- Ophthalmic nerve

External links

- Sinus cavernosus (https://en.wikipedia.org/wiki/Cavernous_sinus%7C)

Source

- RADOMÍR, Čihák. *Anatomie 3 : Třetí, upravené a doplněné vydání.* - edition. Grada Publishing, a.s., 2016. ISBN 9788024756363.