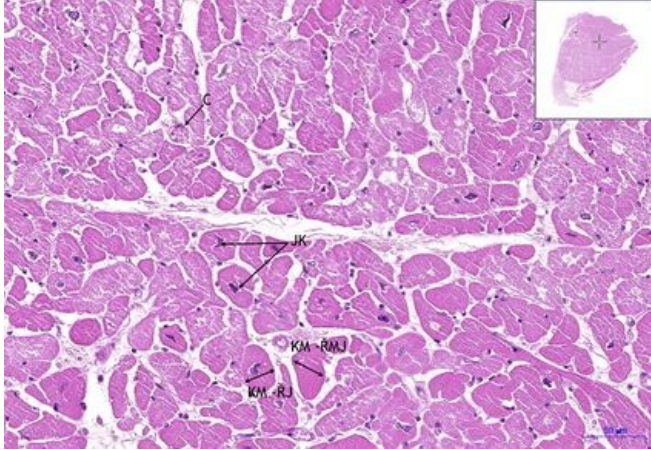


Cardiac muscle - HE

Myocard, HE 20x

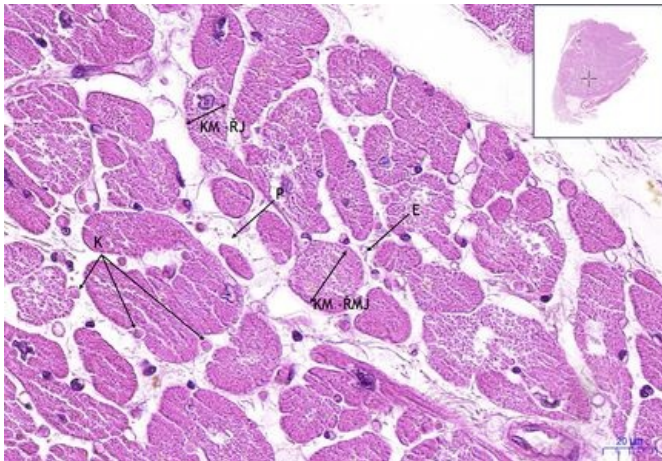


Cardiac muscle - transverse 20X

Cardiac muscle - transverse:

- **KM (ŘMJ)** – cardiomyocyte (section without nucleus)
- **KM (ŘJ)** – cardiomyocyte (section with nucleus)
- **C** – blood vessel
- **JK** – cardiomyocyte nucleus

Myocard, HE 40x



Cardiac muscle 40x

Cardiac muscle - transverse:

- **KM (ŘMJ)** – cardiomyocyte (section without nucleus)
- **KM (ŘJ)** – cardiomyocyte (section with nucleus)
- **E** – endomysium
- **P** – perimysium
- **K** – capillary (one erythrocyte inside)