

# Cardia (histological slide)

The cardia of the stomach is a thin strip of muscle that represents the transition between the esophagus and the stomach and their mucosa. It consists of 4 basic layers, which are characteristic of the general structure of the alimentary canal.

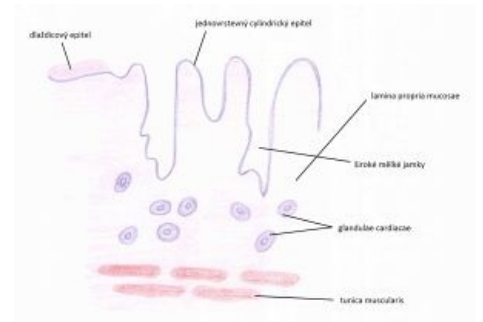
## Tunica mucosa

### Epithelium

- transition of the stratified **squamous** epithelium of the esophagus into a single-layered **cylindrical mucus-forming** - *gastroesophageal junction*

### Lamina propria mucosae

- sparse collagenous tissue, blood vessels, lymphatic infiltration
  - glandulae cardiacae** – branched tubular mucinous glands, the end parts of which can twist and have a spacious lumen
    - their secretory elements produce mucus and lysozyme
    - exceptions can be found that exclude HCl
    - structurally similar to esophageal cardiac glands
- the gastric glands open into wide and shallow pits (**foveolae gastricae**) that reach approximately 1/4 of the mucosa's height



Drawing of cardia

### Lamina muscularis mucosae

- bundles of smooth muscle cells
- usually an inner circular and an outer longitudinal layer

## Tunica submucosa

- sparse **collagenous** tissue

## Tunica muscularis

- 2 layers of muscle
  - inner layer - circular
  - outer layer - longitudinal

## Tunica serosa

- sparse collagenous tissue
- on the surface of the mesothelium - a single-layered flat epithelium

## Links

### Related Articles

- Stomach (preparation)
- Esophagus (preparation)

### References

- MARTÍNEK, Jindřich and Zdeněk VACEK. Histological atlas. 1st ed. Prague: Grada, 2009, 134 pp. ISBN 978-80-247-2393-8.
- LÜLLMANN-RAUCH, Renate and Zdeněk VACEK. Histology. 1st Czech ed. Translation by Radomír Čihák. Prague: Grada, 2012, xx, 556 pp. ISBN 978-80-247-3729-4.
- Presentation from the website of the Institute of Histology, 1st Faculty of Medicine.
- JUNQUEIRA, L. – KELLEY, Robert – CARNEIRO, José. *Basics of histology*. - edition. H+H, 1997. ISBN 9788085787375.

