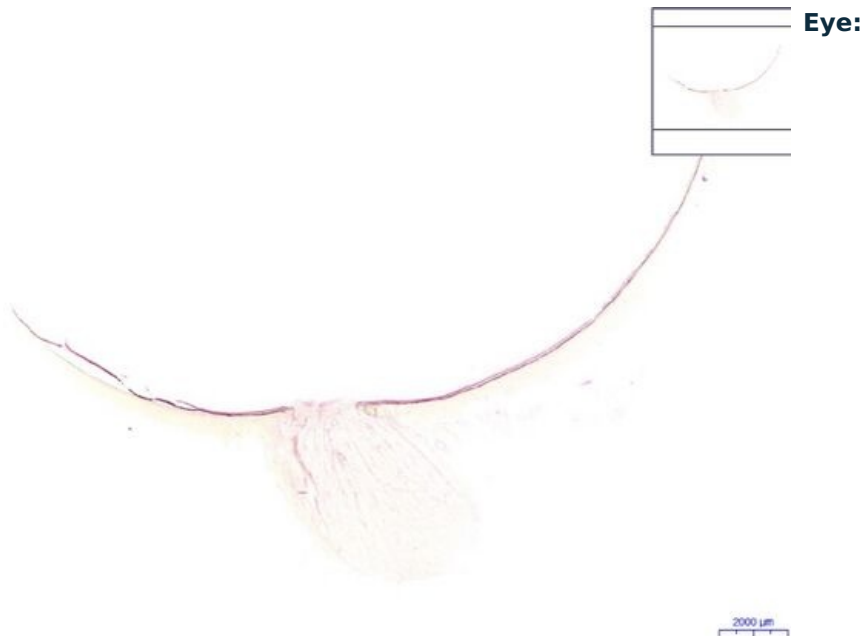


# Bulbus oculi HE

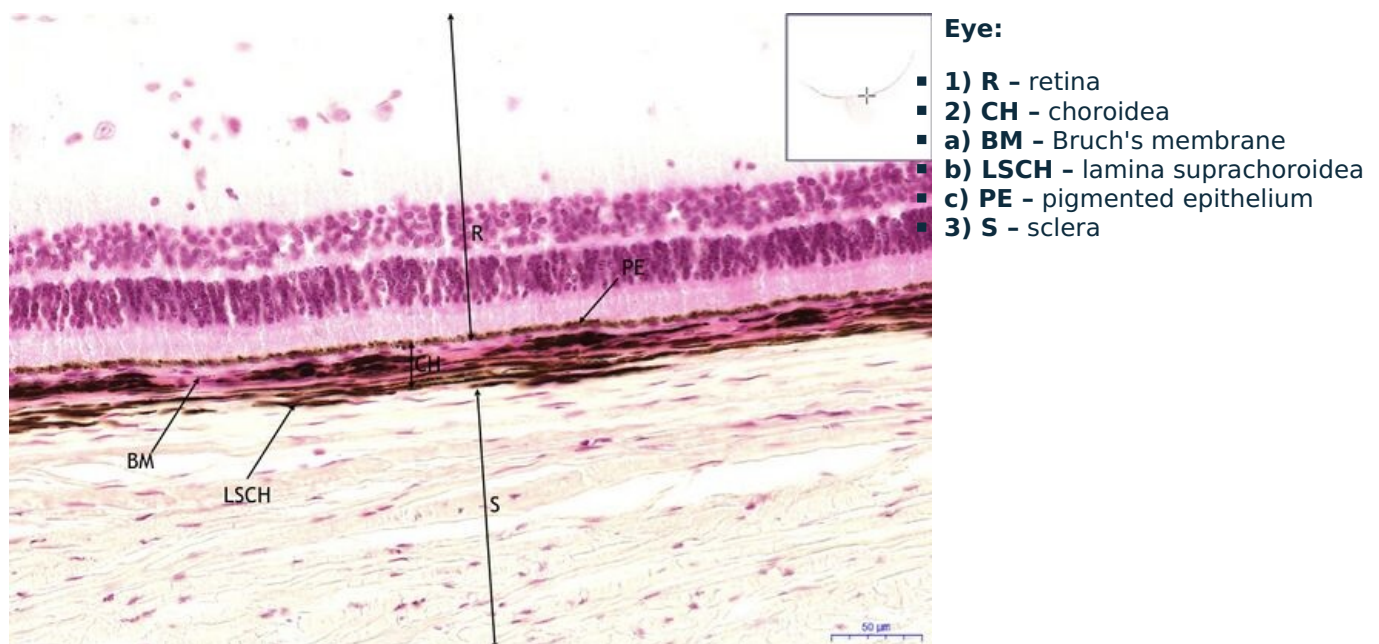
## Modul B

[Expand]

### Eye - HE, 0,4x



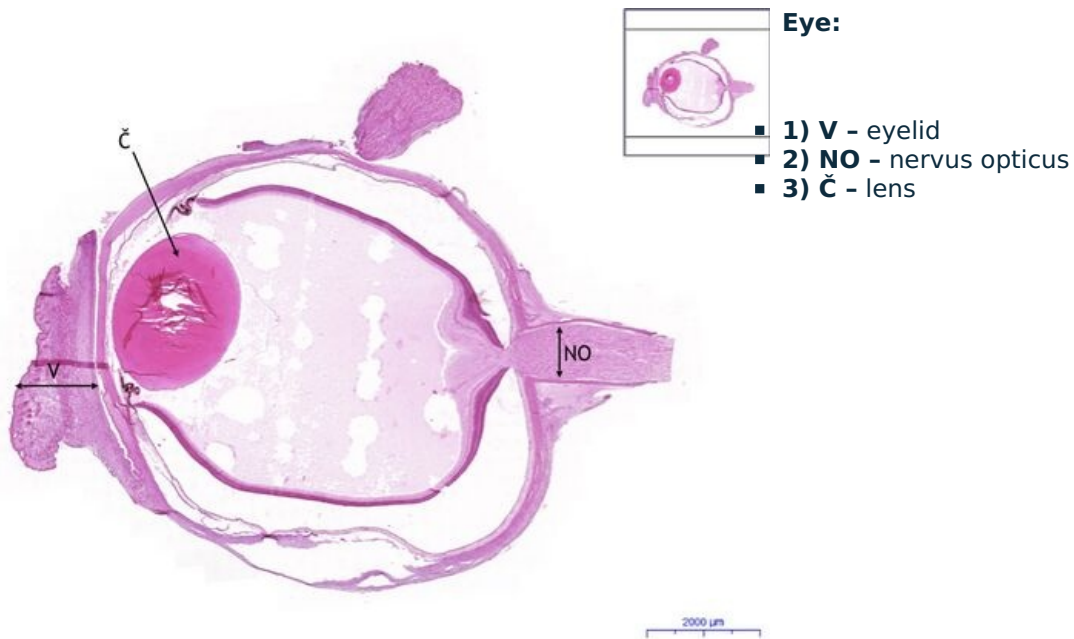
### Oko/Eye - HE, 20x



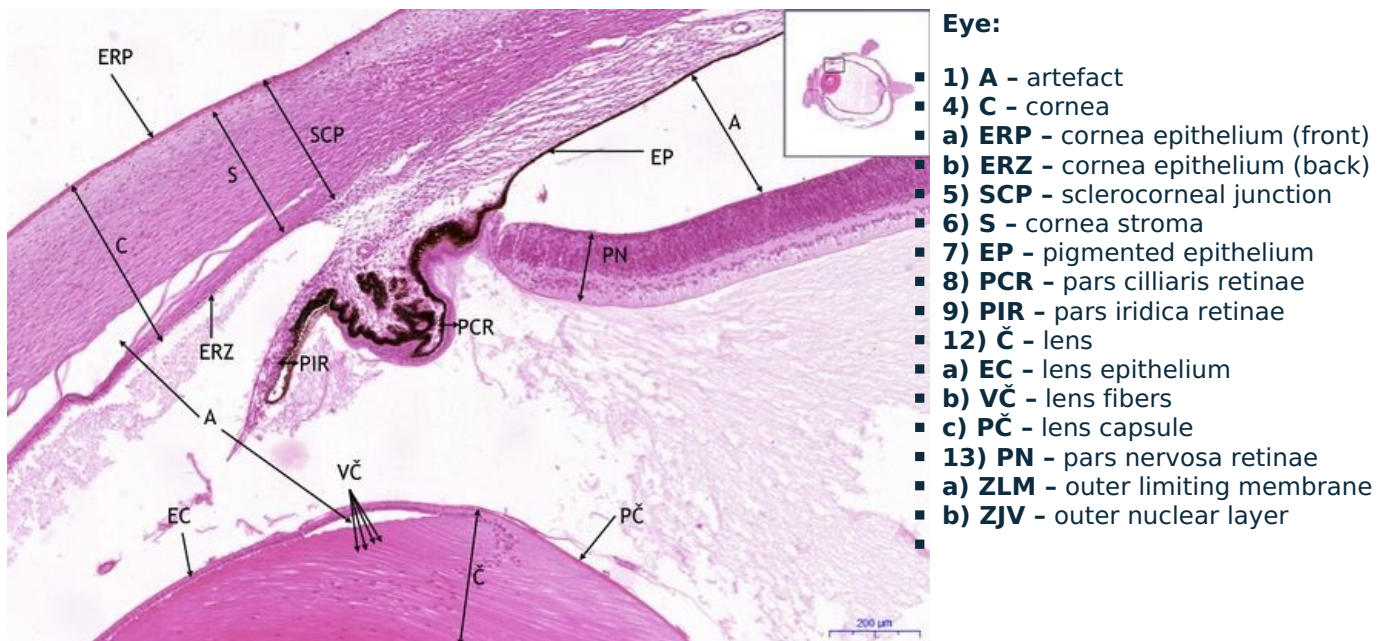
Navigace: Nervová tkáň / Nerve tissue

## Modul A

## Oko/Eye - HE, 0,6x



## Eye - HE, 5x

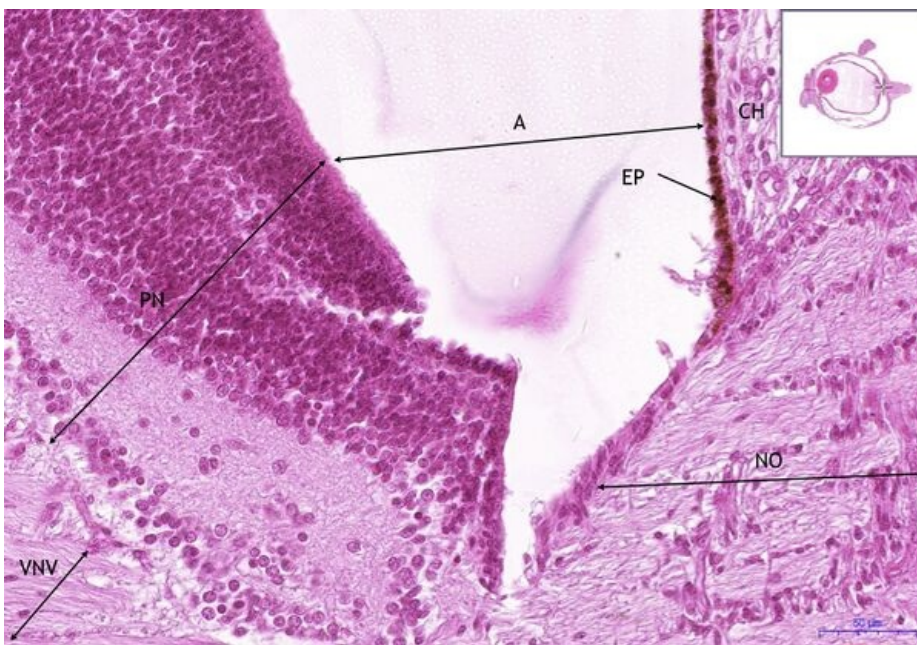


## Eye - HE, 21,6x

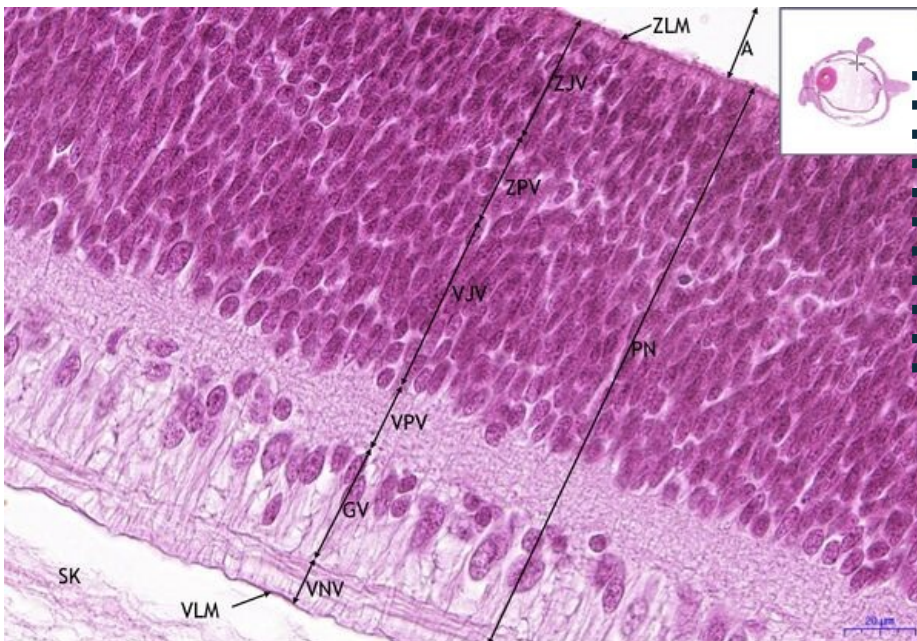
**Eye:**

- 1) A - artefact
- 3) NO - nervus opticus
- 7) EP - pigmented epithelium
- 11) CH - choroidea
- 13) PN - pars nervosa retinae
- g) VNV - nerve fibers layer
-





## Eye - HE, 40x



### Eye:

- 1) A - artefact
- 10) SK - vitreous body
- 13) PN - pars nervosa retinae
- a) ZLM - outer limiting membrane
- b) ZJV - outer nuclear layer
- c) ZPV - outer plexiform layer
- d) VJV - inner nuclear layer
- e) VPV - inner plexiform layer
- f) GV - ganglion layer
- g) VNV - nerve fibers layer
- h) VLM - inner limiting membrane

Navigation: Sense organs