

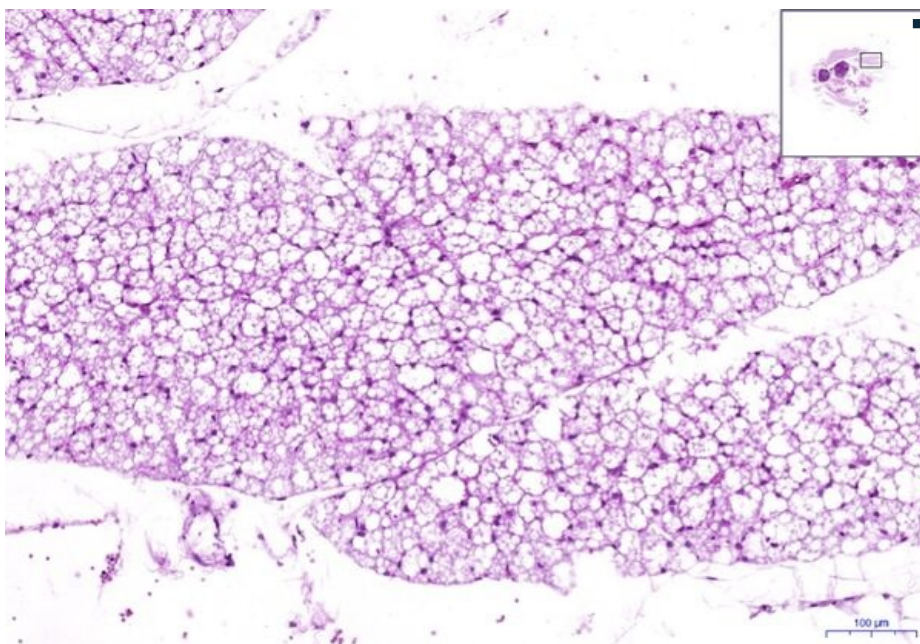
Brown adipose tissue - HE

Brown adipose tissue - HE, 1,8x



- **Brown adipose tissue:**
- 1) **HTT** - Brown adipose tissue
- 2) **LU** - lymph node

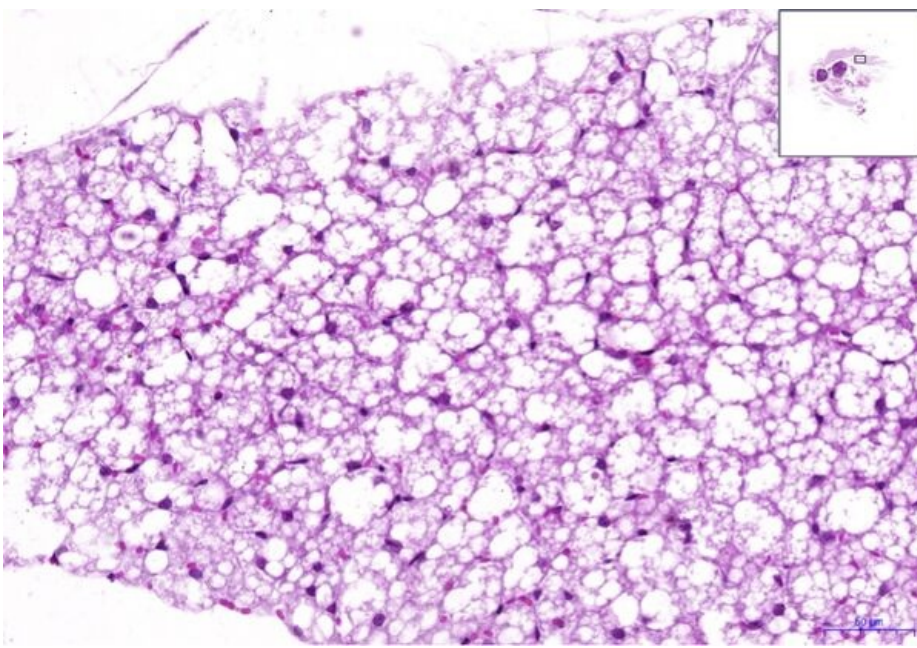
Brown adipose tissue - HE, 10x



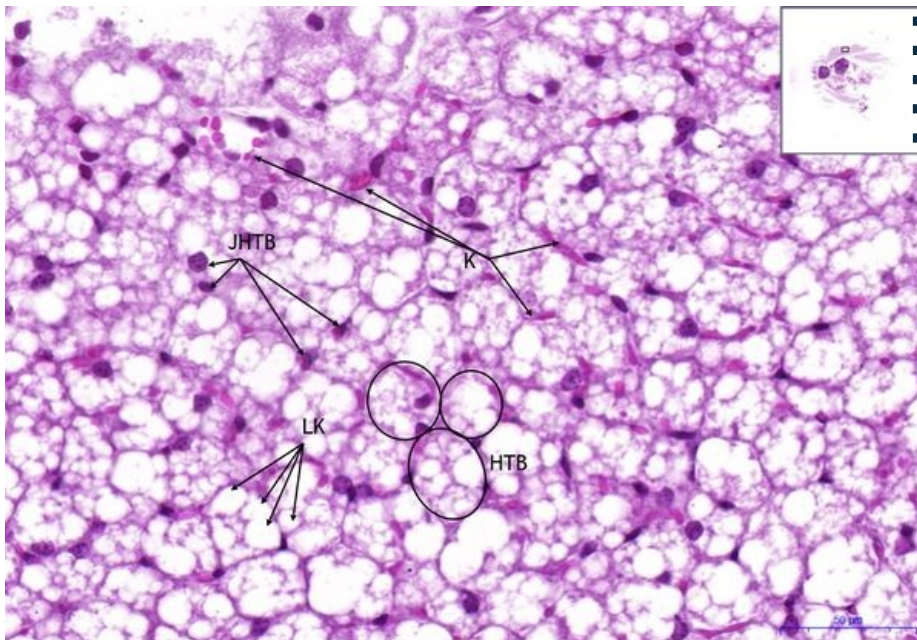
- **Brown adipose tissue**

Brown adipose tissue - HE, 20x

- **Brown adipose tissue**



Brown adipose tissue - HE, 20x



- **Brown adipose tissue:**
- **1) HTB** - brown adipose cell
- **a) JHTB** - nucleus of brown adipose cell
- **b) LK** - lipid droplets
- **2) K** - red blood cells

Navigation

Connective and supporting tissue

← Slide n. 22 | List of the slides | slide n. 24 →