

Brachial artery

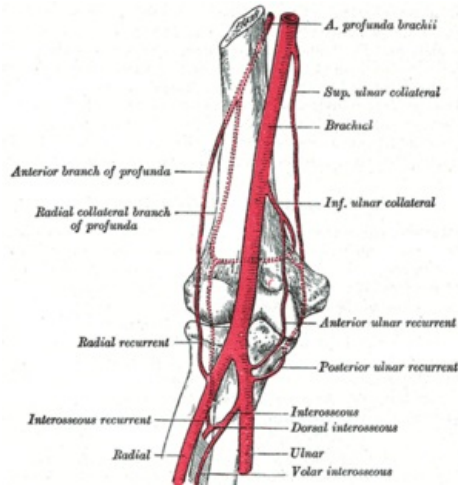
Arteria brachialis is continuation *a. axillaris* from collum chirurgicum humeri. It takes place in the anterior osteofacial space of the arm in the *sulcus bicipitalis medialis*.

It branches out a strong branch of the **a. profunda brachii**, which accompanies the n. radialis in *sulcus nervi radialis*, between the heads of the m. triceps brachii. It also branches out **arteria collateralis ulnaris superior and inferior**.

On the front of the forearm in the *fossa cubitalis* at *collum radii* it divides into *a. radialis* and *a. ulnaris*. It supplies the arm and elbow joint.^[1]

References

1. STANDRING, Susan, et al. *Gray's Anatomy : The Anatomical Basis of Clinical Practice*. 39. edition. London : Elsevier Ltd, 2005. ISBN 0-443-07168-3.



Brachial artery

TA	A12.2.09.018
Continues from	a. axillaris
Branches	a. profunda brachii, a. brachialis spf., a. collateralis ulnaris sup. et inf.
Final branches	a. radialis, a. ulnaris