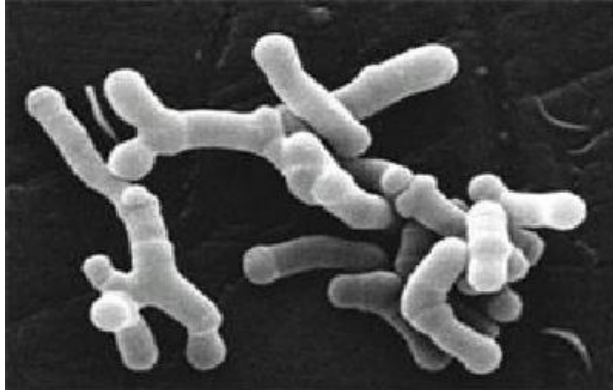


Bifidobacterium

Template:Infobox - bakterie Bifidobacterium is a genus of **gram-positive, non-sporulating, anaerobic rods** that

can branch at the end.



Pathogenity

Pathogenic activity has been described in *B. dentium* , which is implicated in dental caries and rarely in mixed endogenous anaerobic infections.

Links

Related articles

- Bacteria
- Dental caries (etiology, classification, predilection surfaces)

Bibliography

- FRAŇKOVÁ, M – SCHINDLER, J, et al. *Lékařská mikrobiologie – bakteriologie, virologie, parazitologie*. 1. edition. Praha : Marvil, 1996. 558 pp. ISBN 80-238-0297-6.