

# Bicuspid Aortic Valve

**Bicuspid aortic valve** is the most common congenital heart defect, that affects 2% of population. It's a risk factor for developing infective endocarditis. It might be:

- isolated (insignificant defect with systolic heart murmur) or as a part of other heart defects (such as coarctation of the aorta)
- combined with coarctation of the aorta

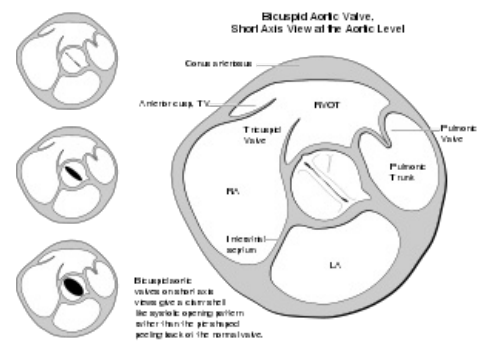
## Links

## Related Articles

- Congenital heart defects
- Dromotropic
- Chronotropy
- Inotropy

## Source

- Pastor, J.: Langenbeck's medical web page (<https://www.freewebs.com/langenbeck/>)
- KLENER, P, et al. *Vnitřní lékařství*. 3. edition. Praha : Galén, 2006. ISBN 80-7262-431-8.
- ŠVÍGLEROVÁ, Jitka. *Bathmotropy* [online]. The last revision 2009-02-18, [cit. 2010-11-12]. <<https://web.archive.org/web/20160416213030/http://wiki.lfp-studium.cz/index.php/Batmotropie>>.



Bicuspid Aortic Valve

