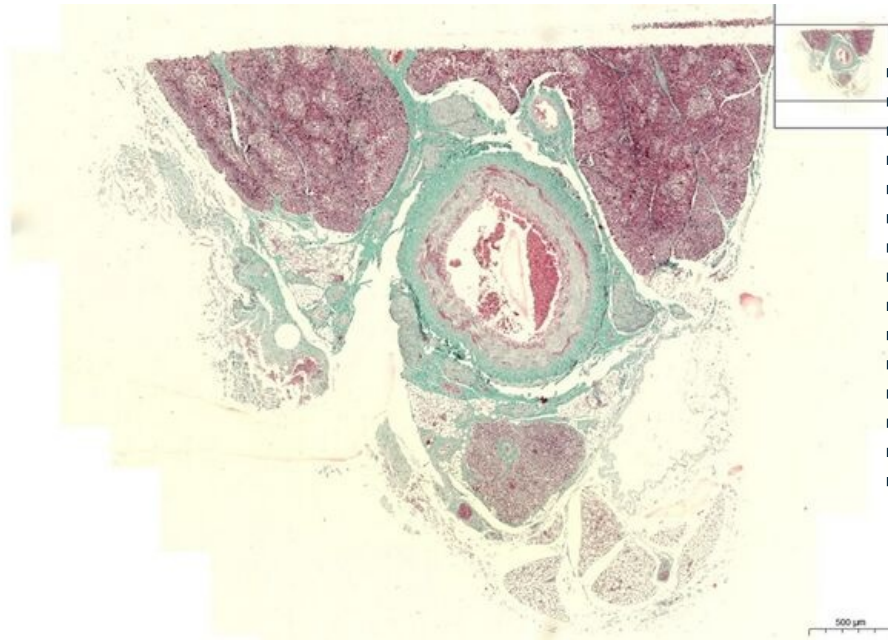


Artery (green trichrome)

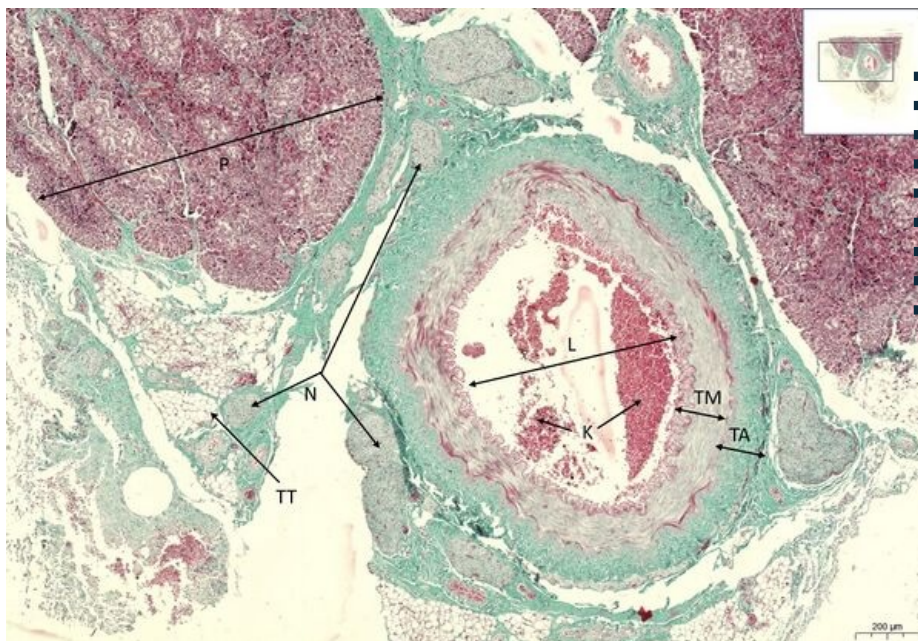
Muscular artery GrT 2,6x



Muscular artery GrT

- 1. **TI** - tunica intima
- a) **E** - endothelium
- b) **MEI** - membrana elastica interna
- 2. **TM** - tunica media
- a) **JSB** - muscle cell nucleus
- 3. **MEE** - membrana elastica externa
- 4. **TA** - tunica adventicia
- 5. **TT** - adipose tissue
- 6. **K** - blood
- 7. **L** - lumen
- 8. **N** - nerves
- 9. **P** - pancreas
-
-
-

Muscular artery GrT 5x



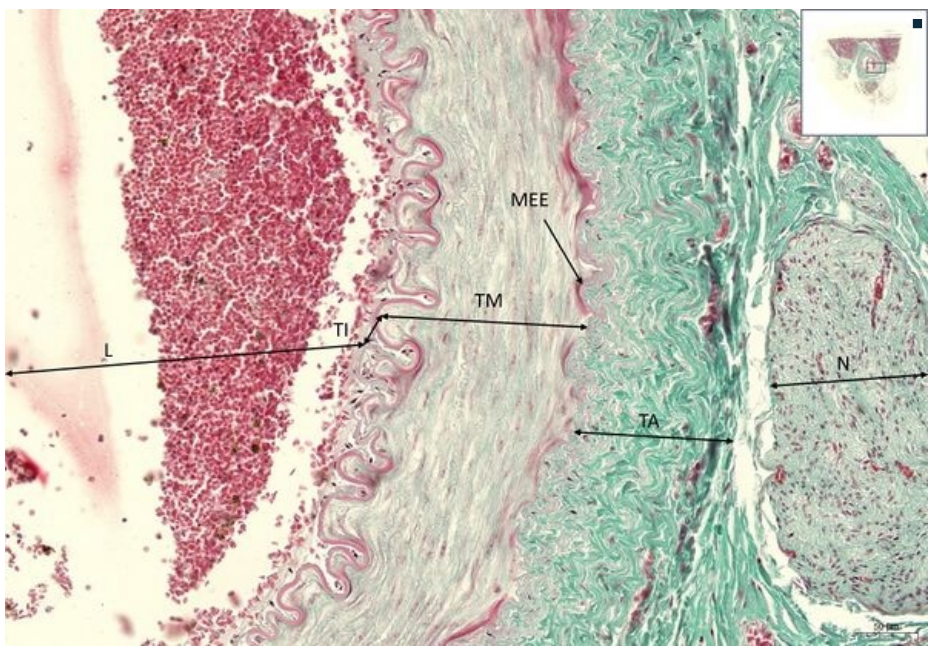
Muscular artery GrT

-
- 2. **TM** - tunica media
- 3. **MEE** - membrana elastica externa
- 4. **TA** - tunica adventicia
- 5. **TT** - adipose tissue
- 6. **K** - blood
- 7. **L** - lumen
- 8. **N** - nerves
- 9. **P** - pancreas

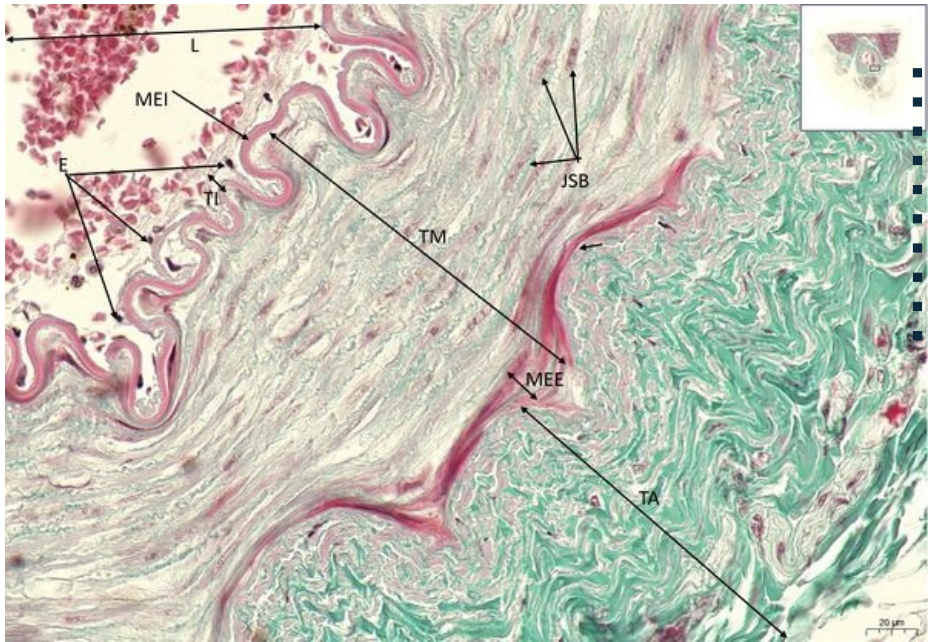
Muscular artery GrT 20x

Muscular artery GrT

-
- 1. **TI** - tunica intima
- 2. **TM** - tunica media
- 3. **MEE** - membrana elastica externa
- 4. **TA** - tunica adventicia
- 7. **L** - lumen
- 8. **N** - nerves



Muscular artery GrT 40x



Muscular artery GrT

- 1. **TI** - tunica intima
- 1. **TI** - tunica intima
- a) **E** - endothelium
- b) **MEI** - membrana elastica interna
- 2. **TM** - tunica media
- a) **JSB** - muscle cell nucleus
- 3. **MEE** - membrana elastica externa
- 4. **TA** - tunica adventicia
- 7. **L** - lumen

Navigation

Navigation: Circulatory system

← Preparation C4

List of preparations

Preparation C6 →