

# Arteria lusoria

**Arteria lusoria** is the designation of **aberrant distance of the right a. subclavian**'. It departs as the last branch of the aortic arch behind the left a. subclavian, or from the descending part of the aorta. It passes through the posterior mediastinum usually behind the esophagus and its oppression causes **dysphagic difficulties** (so-called **dysphagia lusoria**'), *exceptionally it can also go between the esophagus and the trachea, thus oppressing the airways and causing a prolonged cough in infants. With its distance, it can also oppress the n. laryngeus recurrentens sinister*' and lead to Ortner's syndrome. Aberrant spacing can also be associated with the so-called Kommerell's diverticulum.

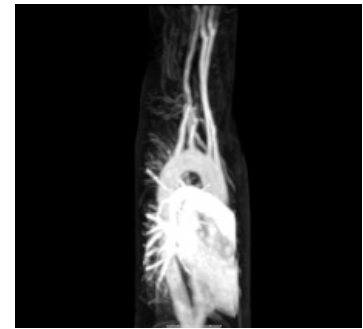
## Links

### Related Articles

- A. subclavian
- Thoracic aorta
- Dysphagia

### Resources

- ŠIHÁK, Radomír – GRIM, Miloš. *Anatomy 3*. 2nd, revised and supplemented edition. Prague : Grada, 2004. 673 pp. vol. 3. ISBN 80-247-1132-X.
- VOKURKA, Martin, et al. *The Great Medical Dictionary*. 7. edition. Prague : Maxdorf, 2007. 1069 pp. ISBN 978-80-7345-130-1.



MRI a. lusoria

A12.2.08.001 (<http://www.unifr.ch/ifaa/Public/EntryPage/TA98%20Tree/Entity%20TA98%20EN/12.2.08.001%20Entity%20TA98%20EN.htm>)

aberrant distance of the right subclavian artery

File:Arteria lusoria.jpg  
CT 3D reconstruction of  
arteria lusoria



CT 3D reconstruction of  
a. lusoria - animation