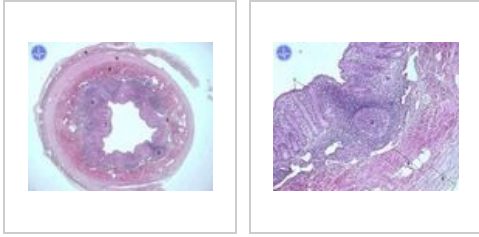


## Appendix (SFLT)

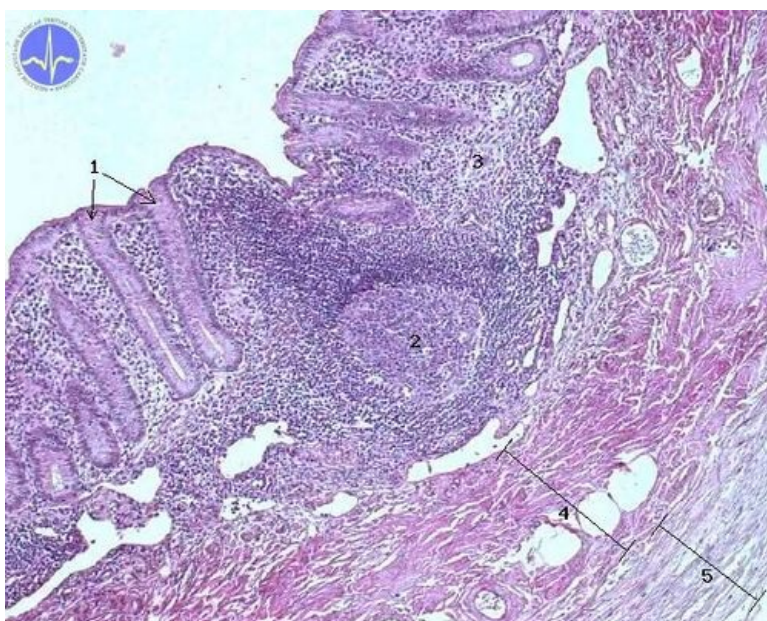


## Appendix HE



**Description:** 1 - mucosa with high cylindrical epithellium, 2 - lymphatic follicle, 3 - lamina propria, 4 - circular smooth muscle, 5 - longitudinal smooth muscle in continuous layer, 6 - serosa.

## Appendix HE - layers of the wall



**Description:** 1 - mucosal glands, 2 - lymphatic follicle, 3 - tissue of lamina propria, 4 - circular smooth muscle, 5 - longitudinal smooth muscle.

## Gastrointestinal tract

- Tongue - tonsilla lingualis (SFLT)

- Gl. submandibularis (SFLT)
- Gl. parotis (SFLT)
- Gl. sublingualis (SFLT)
- Oesophagus (SFLT)
- Duodenum (SFLT)
- Small intestine (SFLT)
- Colon (SFLT)
- Appendix (SFLT)
- Liver (SFLT)
- Gall bladder (SFLT)
- Pancreas (SFLT)

## Links

- Atlas of histology(3. LF UK)