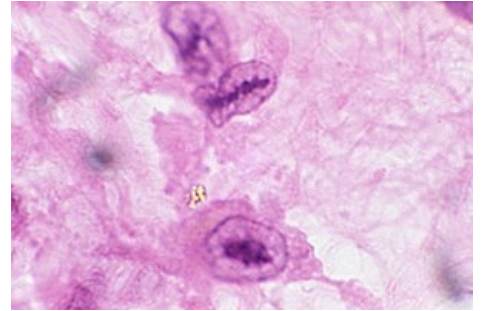


Anitschkow (Anichkov) cells

Anichkov's cells are cardiac histiocytic elements found in the vicinity of fibrinoid necrosis of Aschoff's nodules in rheumatic endocarditis. They are also present under physiological conditions. They are large cells with a centrally located round nucleus and centrally located chromatin. In longitudinal section, the core has the shape of a saw blade.^[1] Compared to Aschoff cells, they are smaller.



Anitschkow (Anichkov) cells

Links

References

- POVÝŠIL, Ctibor – ŠTEINER, Ivo – DUŠEK, Pavel. *Speciální patologie*. 2. edition. Galén, 2007. 430 pp. ISBN 978-807262-494-2.
- VOKURKA, Martin – HUGO, Jan. *Velký lékařský slovník*. 5. edition. Maxdorf, 0000. 1008 pp. ISBN 80-7345-058-5.

Reference

1. MOHAN, Harsh and Ľudovít DANIHEL. *Pathology*. 1st edition. Balneotherma, 2011. 976 pp. ISBN 9788097015664