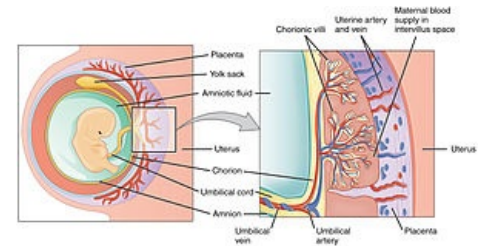


Amnion

Amnion (Greek amnos = lamb, amnion = "sheep's membrane") is **the internal fetal envelope** delimiting the cavity filled with amniotic fluid. It consists of **ectoderm** and **extraembryonic mesoderm** (extraembryonic mesoderm subsequently differentiates into mesenchyme and the latter into the fibrous layer). By enlarging the amniotic cavity, the amnion envelopes the germinal shaft and ductus omphaloentericus, connects them together and helps the primitive umbilical cord to form. In the third of its development (end of the third month), it fuses with the chorion and forms a chorioamnion.



Embryonic envelopes and placenta

Links

Related articles

- Placenta
- The first week of embryo development
- Portal: Embryological preparations
- Prenatal period
- Embryonic envelopes and placenta

External references

- Amnion (english wikipedia)

Bibliography

- VOKURKA, Martin – HUGO, Jan, et al. *Velký lékařský slovník*. 9. edition. Praha : Maxdorf, 2009. 1159 pp. ISBN 978-80-7345-202-5.
- SADLER, Thomas, W – SINHA, M.D. *Langmanova lékařská embryologie*. 1. české edition. Praha : Grada, 2011. 414 pp. ISBN 978-80-247-2640-3.