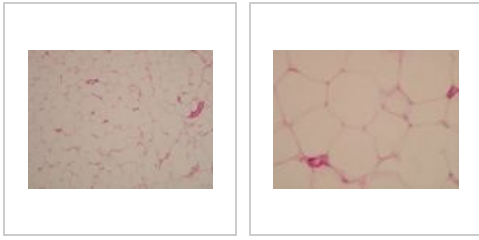
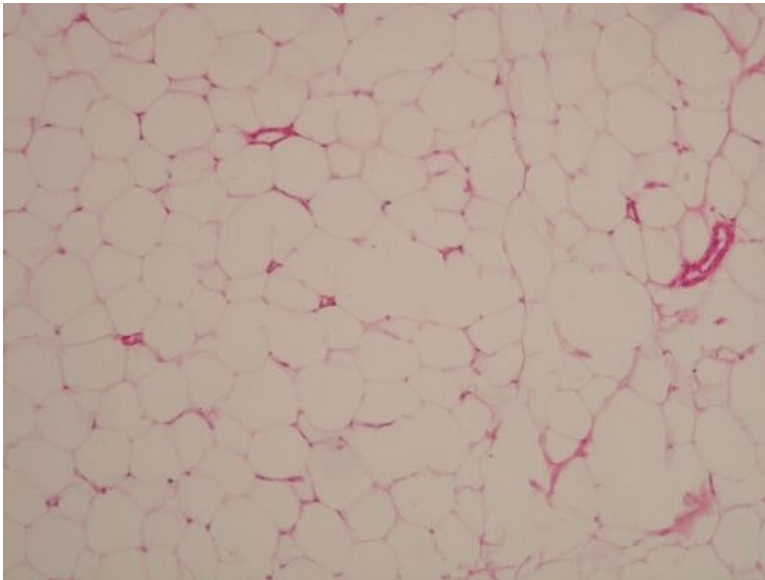


Adipose tissue (histology slide)

Overview



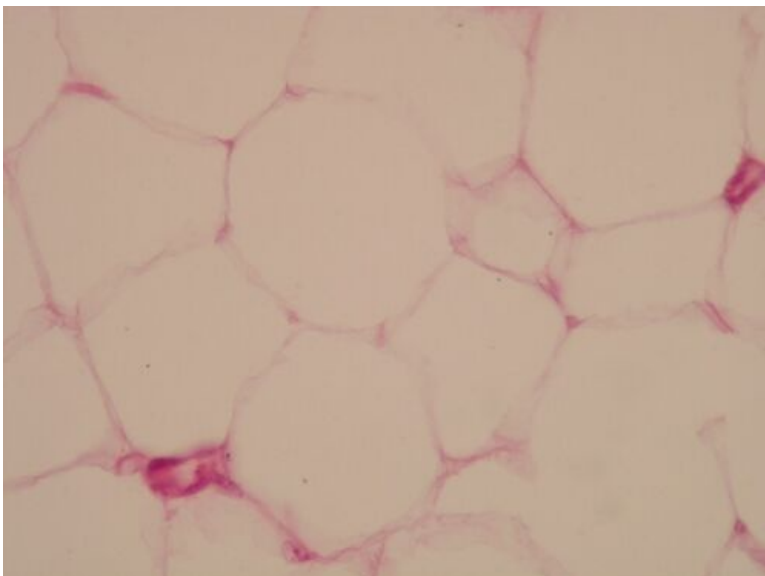
Preparation 1



Name: White adipose tissue HE

Description: White adipose tissue cells have a nucleus on the periphery. The cell contains one large fat drop, cytoplasm forms only a thin strip on the periphery. The cell has the appearance of a signet ring. The cells form lobules separated by dense collagenous tissue. Adipose tissue is richly vascularized and innervated.

Preparation 2



Name: White adipose tissue HE

Description: When processing a histological section, fat (triglycerides) is washed out of the cell, the central part of the cell is therefore empty. The lipid droplet is not separated from the cytoplasm by a membrane. Cytoplasm forms only a thin strip at the periphery. Fat cells are surrounded by the lamina basalis.

Connective tissue

Mesenchyme (preparation)

Umbilical cord (preparation)

Aorta (preparation)

Brown adipose tissue (preparation)

Adipose tissue (histology slide)

Tendon (preparation)

Articular cartilage (preparation)

Epiglottis (preparation)

Desmogenous ossification (preparation)

Enchondral ossification (preparation)

Lamellar bone (preparation)

Links

- Module Cellular Basics of medicine(3. LF UK)

Study materials

- Adipose tissue