

Gallbladder and Extrahepatic Bile Ducts

The gallbladder receives bile from the liver through the hepatic ducts for storage and later release, which aids in the digestion of fats.

Gallbladder

The gallbladder consists of the: fundus, body and neck:

- the fundus is on the inferior border of the liver,
- the body is on the transverse colon and superior part of duodenum,
- the neck has mucosal folds and drains into the cystic duct.

Bile Ducts

- The left and right hepatic ducts fuse to form the common hepatic duct.
- The common hepatic duct then fuses with the cystic duct to become the common bile duct.
- The common bile duct then joins with the pancreatic duct to form the **Ampulla of Vater**, which drains into the major duodenal papilla.

Links

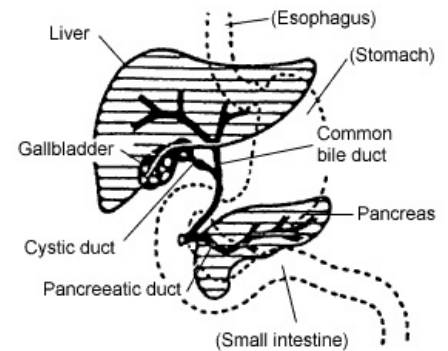
Related Articles

- Pancreas
- Klatskin Tumor

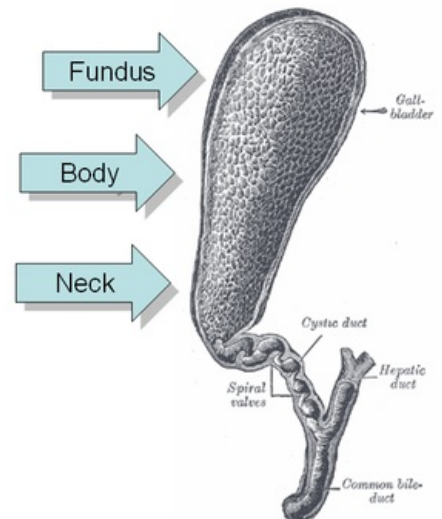
Bibliography

- SNELL, Richard S. *Clinical Anatomy by Regions*. 8th Edition edition. 2004. ISBN 978-0-7817-6404-9.

Biliary Tract



Gallbladder and biliary duct syntopy



Gallbladder – fundus, body and neck